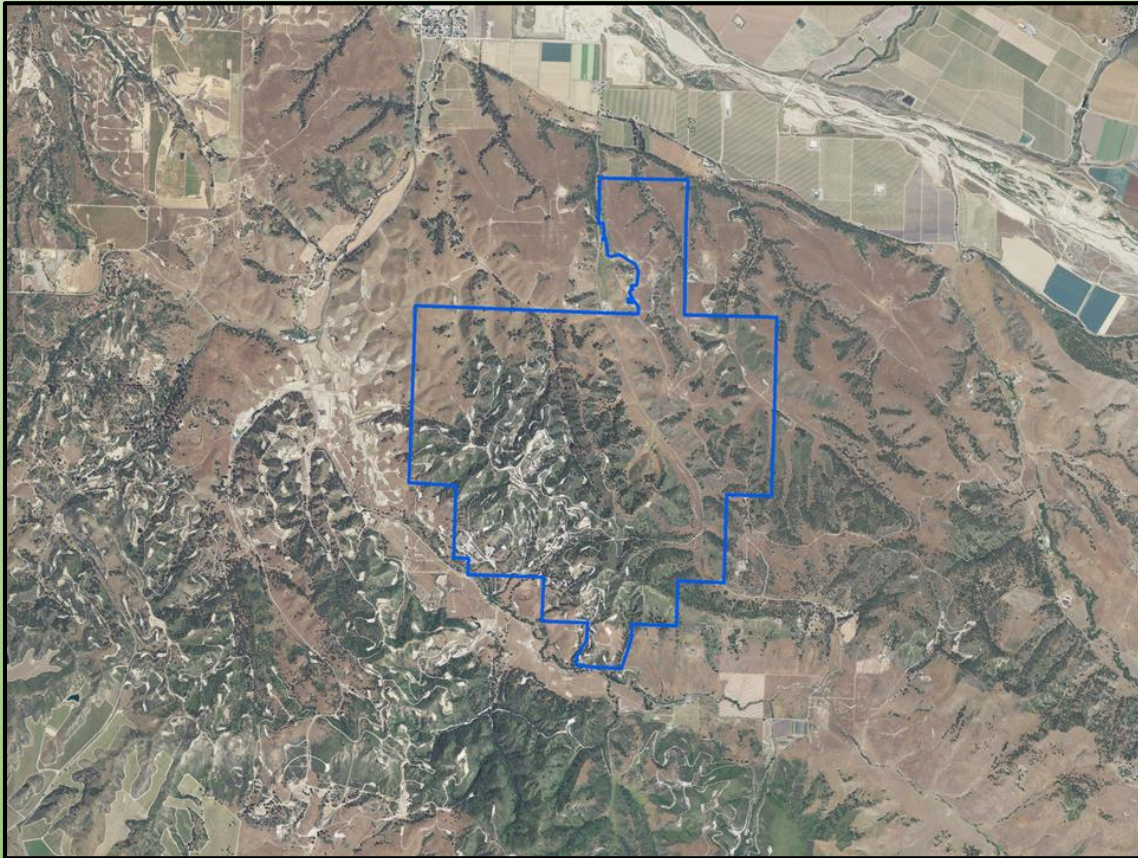


OIL AND GAS DRILLING/PRODUCTION PLAN VOLUME I: PERMIT APPLICATION PACKAGE

EAST CAT CANYON OIL FIELD REDEVELOPMENT PROJECT
SANTA BARBARA COUNTY, CA



Applicant:

Aera Energy LLC
PO Box 11164
Bakersfield, CA 93389-1164

Agent:

Padre Associates, Inc.
369 Pacific Street
San Luis Obispo, California 93401

April 2016

OIL AND GAS DRILLING/PRODUCTION PLAN PERMIT APPLICATION PACKAGE

EAST CAT CANYON OIL FIELD REDEVELOPMENT PROJECT SANTA BARBARA COUNTY, CALIFORNIA

Applicant:

Aera Energy LLC
PO Box 11164
Bakersfield, CA 93389-1164

Consultants:

Padre Associates, Inc.
Insight Environmental Consultants, Inc.
TJ Cross Engineers, Inc.
Behren and Associates, Inc.
Associated Transportation Engineers
Storrer Environmental Services
Garcia and Associates
LSA Associates, Inc.
Collings and Associates, LLC.
Dixon Risk Services, Inc.
Fugro Consultants, Inc.
RRM Design Group

APRIL 2016

TABLE OF CONTENTS

1.0	INTRODUCTION AND PROJECT OVERVIEW.....	1-1
1.1	PROJECT PURPOSE AND OBJECTIVES	1-1
1.2	EAST CAT CANYON SITE BACKGROUND.....	1-2
1.2.1	Site Location Description.....	1-2
1.2.2	Operator and Permittee	1-2
1.2.3	Historical Site Uses.....	1-9
1.2.4	Existing Facilities and Operations.....	1-10
1.2.5	Adjacent Site Uses Description	1-10
1.3	PROJECT OVERVIEW	1-27
1.3.1	Thermal Oil Recovery Process.....	1-28
1.3.2	Subsurface – Wells.....	1-29
1.3.3	Processing Systems	1-37
1.3.4	Support Infrastructure.....	1-37
1.3.5	Utility Connections.....	1-38
1.4	PERMITTING REQUIREMENTS	1-39
1.4.1	Federal Agencies.....	1-42
1.4.2	State Agencies.....	1-42
1.4.3	Local Agencies	1-44
1.5	KEY ENVIRONMENTAL CONSIDERATIONS AND PROJECT INCORPORATED MEASURES TO REDUCE POTENTIAL IMPACTS	1-45
1.6	PROJECT SCHEDULE	1-59
2.0	PROJECT DESCRIPTION.....	2-1
2.1	DESIGN BASIS	2-1
2.1.1	Production, Treatment, and Shipping of Produced Oil and Gas.....	2-1
2.1.2	Water Sourcing and Disposition	2-2
2.1.3	Light Crude Oil.....	2-5
2.1.4	Utilities and Communications	2-5
2.2	SITE PREPARATION.....	2-6
2.2.1	Removal of Existing Facilities	2-6
2.2.2	Legacy Fill Areas	2-6
2.2.3	Grading Estimates	2-6
2.2.4	Site Entrances	2-16
2.2.5	Utilities	2-16
2.3	SUBSURFACE – WELLS.....	2-19
2.3.1	Well Types.....	2-19
2.4	PROCESSING SYSTEMS	2-21
2.4.1	Intra-Field Gathering and Distribution System.....	2-22
2.4.2	Central Processing Facility	2-31
2.4.3	Steam Generation and Distribution.....	2-38
2.5	SUPPORT INFRASTRUCTURE	2-43
2.5.1	Buildings	2-43

2.5.2	Lighting	2-43
2.5.3	Fire Protection	2-43
2.6	UTILITY CONNECTIONS.....	2-49
2.6.1	Natural Gas Pipeline.....	2-49
2.6.2	Electrical Power Service.....	2-50
2.6.3	On-site Septic System	2-59
2.7	EMERGENCY SHUT-DOWN SYSTEMS.....	2-59
2.8	OPERATIONS AND MAINTENANCE	2-60
2.8.1	Operations Processes, Systems, and Controls	2-60
2.8.2	Well Maintenance and Workover Operations	2-62
2.8.3	Permanent Personnel Requirements.....	2-65
2.8.4	Tanker Truck Transportation Program.....	2-69
2.8.5	Waste Handling and Storage.....	2-75
2.8.6	Personnel and Facility Safety Protocol/Emergency Response.....	2-76
2.8.7	Site Security.....	2-77
2.9	END OF LIFE AND DECOMMISSIONING	2-78
2.9.1	General Decommissioning Procedures	2-78
2.9.2	Santa Barbara County Petroleum Code	2-79
3.0	CONSTRUCTION PROCEDURES	3-1
3.1	CONSTRUCTION TIMING (PHASING)	3-1
3.1.1	Processing Facilities and Utilities	3-1
3.1.2	Field Infrastructure.....	3-1
3.2	EQUIPMENT AND PERSONNEL REQUIREMENTS	3-2
3.3	PROJECT SITE ACCESS AND STAGING AREAS	3-5
3.4	PROCESSING FACILITIES	3-5
3.4.1	Construction Methodology	3-5
3.5	FIELD INFRASTRUCTURE	3-6
3.5.1	Well Pads and Roadways.....	3-13
3.5.2	Well Drilling and Completion.....	3-14
3.5.3	Intra-Field Gathering and Distribution Pipelines	3-24
3.5.4	Intra-Field Electrical Distribution	3-27
3.6	UTILITIES.....	3-28
3.6.1	Natural Gas Pipeline.....	3-28
3.6.2	Electrical Transmission Line.....	3-40
3.6.3	Fresh Water Distribution System	3-47
3.6.4	On-site Septic System	3-47
3.7	MATERIAL RE-USE AND WASTE DISPOSAL.....	3-47
4.0	ENVIRONMENTAL ANALYSIS.....	4-1
4.1	AIR QUALITY	4.1-1
4.1.1	Environmental Setting.....	4.1-1
4.1.2	Regulatory Setting	4.1-13

4.1.3	Project Emissions Estimation Methodology	4.1-20
4.1.4	Air Emissions Impact Analysis.....	4.1-42
4.1.5	Project-Incorporated Avoidance and Minimization Measures.....	4.1-62
4.2	HAZARDOUS MATERIALS/RISK OF UPSET	4.2-1
4.2.1	Environmental Setting.....	4.2-1
4.2.2	Regulatory Setting	4.2-2
4.2.3	Impact Assessment Standards.....	4.2-7
4.2.4	Project-Specific Quantitative Risk Analysis (Assessment).	4.2-11
4.2.5	Impact Analysis.....	4.2-11
4.2.6	Project-Incorporated Avoidance and Minimization Measures.....	4.2-19
4.3	WATER RESOURCES.....	4.3-1
4.3.1	Environmental Setting.....	4.3-1
4.3.2	Regulatory Setting	4.3-4
4.3.3	Impact Assessment Standards	4.3-7
4.3.4	Impact Analysis.....	4.3-10
4.3.5	Project-Incorporated Avoidance and Minimization Measures.....	4.3-13
4.4	BIOLOGICAL RESOURCES	4.4-1
4.4.1	Environmental Setting.....	4.4-1
4.4.2	Regulatory Setting	4.4-2
4.4.3	Impact Assessment Standards	4.4-8
4.4.4	Summary of Agency Consultation, Biological Surveys, Desktop Review	4.4-11
4.4.5	Biological Resource Survey Findings	4.4-19
4.4.6	Impact Analysis.....	4.4-94
4.4.7	Project-Incorporated Avoidance and Minimization Measures.....	4.4-116
4.5	GEOLOGIC PROCESSES	4.5-1
4.5.1	Environmental Setting.....	4.5-1
4.5.2	Regulatory Setting	4.5-8
4.5.3	Impact Assessment Standards	4.5-13
4.5.4	Impact Analysis.....	4.5-14
4.5.5	Project-Incorporated Avoidance and Minimization Measures.....	4.5-15
4.6	CULTURAL RESOURCES.....	4.6-1
4.6.1	Environmental Setting.....	4.6-1
4.6.2	Regulatory Setting	4.6-6
4.6.3	Impact Assessment Standards	4.6-7
4.6.4	Impact Analysis.....	4.6-7
4.6.5	Project-Incorporated Avoidance and Minimization Measures.....	4.6-11
4.7	FIRE PROTECTION.....	4.7-1
4.7.1	Project Setting	4.7-1
4.7.2	Regulatory Setting	4.7-4
4.7.3	Impact Assessment Standards	4.7-5
4.7.4	Impact Analysis.....	4.7-6
4.7.5	Project-Incorporated Avoidance and Minimization Measures.....	4.7-11
4.8	NOISE	4.8-1

4.8.1	Environmental Setting.....	4.8-1
4.8.2	Regulatory Setting	4.8-6
4.8.3	Impact Assessment Standards.....	4.8-14
4.8.4	Impact Analysis.....	4.8-15
4.8.5	Project-Incorporated Avoidance and Minimization Measures.....	4.8-29
4.9	TRANSPORTATION AND CIRCULATION	4.9-1
4.9.1	Environmental Setting.....	4.9-1
4.9.2	Regulatory Setting	4.9-9
4.9.3	Impact Assessment Standards.....	4.9-12
4.9.4	Impact Analysis.....	4.9-13
4.9.5	Project-Incorporated Avoidance and Minimization Measures.....	4.9-20
4.10	AESTHETICS/VISUAL RESOURCES	4.10-1
4.10.1	Environmental Setting.....	4.10-1
4.10.2	Regulatory Setting	4.10-2
4.10.3	Impact Assessment Standards.....	4.10-7
4.10.4	Impact Analysis.....	4.10-7
4.10.5	Project-Incorporated Avoidance and Minimization Measures.....	4.10-29
4.11	ENVIRONMENTAL RESOURCE AREAS ELIMINATED FROM FURTHER CONSIDERATION	4.11-1
4.11.1	Agricultural Resources.....	4.11-1
4.11.2	Energy and Mineral Resources	4.11-1
4.11.3	Land Use	4.11-2
4.11.4	Public Services	4.11-2
4.11.5	Utilities and Service Systems	4.11-3
4.11.6	Recreation	4.11-3
5.0	CUMULATIVE DEVELOPMENT	5-1
5.1	CUMULATIVE DEVELOPMENT SCENARIO	5-1
5.2	AIR QUALITY	5-21
5.2.1	Cumulative Regional Air Quality Impacts	5-21
5.2.2	Cumulative Localized Air Quality Impacts	5-23
5.3	HAZARDOUS MATERIALS/RISK OF UPSET	5-24
5.4	WATER RESOURCES.....	5-24
5.4.1	Storm Water and Surface Water Quality and Quantity	5-24
5.4.2	Groundwater Quality and Quantity	5-25
5.5	BIOLOGICAL RESOURCES.....	5-25
5.6	GEOLOGIC PROCESSES.....	5-26
5.7	CULTURAL RESOURCES.....	5-26
5.8	FIRE PROTECTION.....	5-27
5.9	NOISE AND VIBRATION	5-27
5.10	TRANSPORTATION/CIRCULATION.....	5-28
5.10.1	Roadway Operations	5-28
5.10.2	Intersection Operations.....	5-28
5.11	AESTHETICS/VISUAL RESOURCES	5-33

6.0 COMPILED REFERENCES6-1

LIST OF TABLES

Table 1.2-1. Aera Energy LLC Property Details.....	1-9
Table 1.4-1. Anticipated Permit Approvals.....	1-39
Table 1.5-1. Project-Incorporated Avoidance and Minimization Measures.....	1-46
Table 2.2-1. Estimated Project Disturbance Area ¹	2-9
Table 2.2-2. Cut and Fill Estimate (Phases I and II)	2-11
Table 2.2-3. Well Pad Grading Estimates	2-13
Table 2.3-1. Number of Wells by Phase	2-19
Table 2.3-2. Fresh Groundwater Well Name and Status	2-21
Table 2.4-1. Intra-field Pipelines	2-22
Table 2.8-1. Personnel Requirements and Shift Schedules	2-65
Table 2.8-2. Process Waste Streams	2-76
Table 3.2-1. Equipment and Personnel - Peak Estimates	3-2
Table 3.5-1. Proposed Drilling and Completion Programs.....	3-22
Table 3.6-1. Natural Gas Pipeline Staging Areas	3-29
Table 4.1-1. Climatic Data for the Project Area	4.1-1
Table 4.1-2. Existing Air Quality Monitoring Data in Project Area.....	4.1-2
Table 4.1-3. Global Warming Potential of Various Gases	4.1-8
Table 4.1-4. 2012 Emission Inventory for Santa Barbara County.....	4.1-12
Table 4.1-5. Federal and California Standards and Santa Barbara County Attainment Status	4.1-16
Table 4.1-6. Grading Area and Cut and Fill Volumes by Year.....	4.1-21
Table 4.1-7. Construction Vehicles Travel Distance by Year.....	4.1-21
Table 4.1-8. Drilling Vehicles Travel Distance by Year.....	4.1-23
Table 4.1-9. 85 Million British Thermal Units Per Hour Steam Generator Emission Factors... 4.1-27	
Table 4.1-10. 62.5 Million British Thermal Units Per Hour Steam Generator Emission Factors	4.1-27
Table 4.1-11. 40 Million British Thermal Units Per Hour Flare Emission Factors	4.1-29
Table 4.1-12. Internal Combustion Engine Emission Factors	4.1-29
Table 4.1-13. Component Counts.....	4.1-32
Table 4.1-14. Operating Schedule for Emergency Equipment	4.1-33
Table 4.1-15. Required Cancer Risk Scenarios.....	4.1-39
Table 4.1-16. Operating Schedule for Emergency Equipment	4.1-40
Table 4.1-17. Project Short Term Unmitigated Construction Emissions – By Year	4.1-42
Table 4.1-18. 14-Mile Fuel Line Unmitigated Construction Emissions – By Year.....	4.1-43

Table 4.1-19. 115KV Interconnect and Substation Unmitigated Construction Emissions – By Year	4.1-44
Table 4.1-20. Drilling Short Term Unmitigated Construction Emissions – By Year	4.1-44
Table 4.1-21. Short Term Unmitigated Construction Emissions – Peak Year	4.1-45
Table 4.1-22. Project Short Term Mitigated Construction Emissions – By Year	4.1-47
Table 4.1-23. 14-Mile Fuel Line Mitigated Construction Emissions – By Year	4.1-48
Table 4.1-24. 115KV Interconnect and Substation Mitigated Construction Emissions – By Year	4.1-48
Table 4.1-25. Drilling Short Term Mitigated Construction Emissions – By Year	4.1-48
Table 4.1-26. Short Term Mitigated Construction – Peak Year	4.1-50
Table 4.1-27. Long Term Unmitigated Operational Emissions – Peak Year	4.1-51
Table 4.1-28. Long Term Mitigated Operational Emissions – Peak Year	4.1-52
Table 4.1-29. Estimated Annual Mitigated Greenhouse Gas Emissions for Peak Year 2024 (Metric Tons per Year)	4.1-54
Table 4.1-30. Summary of Maximum Cancer Health Risk Impacts	4.1-56
Table 4.1-31. Summary of Maximum Chronic Non-Cancer Health Risk Impacts	4.1-57
Table 4.1-32. Summary of Maximum Acute Non-Cancer Health Risk Impacts	4.1-57
Table 4.1-33. Summary of Maximum 8-Hour Chronic Non-Cancer Health Risk Impacts	4.1-58
Table 4.1-34. Risk Drivers	4.1-58
Table 4.1-35. Project Impacts on Class I Area Vs. Maximum Allowable Increase.....	4.1-59
Table 4.1-36. Predicted Ambient Air Quality Impacts	4.1-60
Table 4.1-37. Comparison of Maximum Modeled Project Impact with Prevention of Significant Deterioration Significance Thresholds	4.1-61
Table 4.2-1. County of Santa Barbara Potential Significance Classes for Risk.....	4.2-8
Table 4.2-2. Hazardous Materials Use and Storage - Equipment List.....	4.2-15
Table 4.2-3. Summary of Predicted Release Frequencies	4.2-17
Table 4.3-1. Annual Fresh Water Use During Project Operations	4.3-12
Table 4.4-1. Agency Consultation Summary	4.4-11
Table 4.4-2. Summary of the Biological Survey Areas	4.4-12
Table 4.4-3. Summary of Completed Field Surveys	4.4-15
Table 4.4-4. Summary of Sensitive Habitats Occurring within the Project Region	4.4-23
Table 4.4-5. Summary of Vegetation Types of the Project Region.....	4.4-44
Table 4.4-6. Special-Status Plant Species of the Project Region	4.4-68
Table 4.4-7. Special-Status Wildlife Species of the Project Region.....	4.4-78
Table 4.4-8. Summary of Vegetation Impacts Resulting from Project Activities	4.4-97
Table 4.4-9. Ranking of Potential for CA Tiger Salamander to occur within Project Site...	4.4-110
Table 4.4-10. Project Impacts Based on California Tiger Salamander Potential	4.4-113

Table 4.4-11. Mitigation for Loss of Potential California Tiger Salamander Upland Habitat.....	4.4-115
Table 4.5-1. Faults Located within the Vicinity of the Project Site	4.5-7
Table 4.6-1. Previously Recorded Cultural Resources within 0.5-mile of the Project Site.....	4.6-4
Table 4.6-2. Cultural Resources Inventoried during the 2013 Pedestrian Survey within the Aera Property Boundary	4.6-5
Table 4.6-3. Cultural Resources Identified during Phase I Cultural Resources Survey for the Natural Gas Import Pipeline Route	4.6-5
Table 4.6-4. Cultural Resources Identified during Phase I Cultural Resources Survey for the Electrical Line Route	4.6-6
Table 4.7-1. Potential Fire Hazard in Primary Areas of Risk and Fire Protection Control/Project Design	4.7-2
Table 4.7-2. Santa Barbara County Fire Prevention Division Development Standards.....	4.7-5
Table 4.8-1. Common Sound Levels/Sources and Subjective Human Responses	4.8-2
Table 4.8-2. Structural Guideline Vibration Criteria	4.8-4
Table 4.8-3. Human Guideline Structural Criteria	4.8-4
Table 4.8-4. 24-Hour Ambient Survey Results	4.8-5
Table 4.8-5. 20-Minute Traffic Measurement Results.....	4.8-6
Table 4.8-6. Worst-Case Noise Scenario for Construction Activities	4.8-15
Table 4.8-7. Phase I, Year -1 Construction Noise Levels	4.8-17
Table 4.8-8. Phase II, Year -4 Construction Noise Levels	4.8-17
Table 4.8-9. Unmitigated Well Pad Grading Noise Levels	4.8-18
Table 4.8-10. Drilling Noise Levels at Well Pads with Project-Incorporated Measures (NOISE-1 through NOISE-5)	4.8-21
Table 4.8-11. Anticipated Production Noise Levels	4.8-23
Table 4.8-12. Project Traffic Impact on Existing and Future Conditions	4.8-25
Table 4.8-13. Vibration Analysis Results	4.8-27
Table 4.9-1. Crude Oil Import/Export Trucking Route (Local Roadway) Options	4.9-1
Table 4.9-2. Regional Highways within the Project Area	4.9-2
Table 4.9-3. Regional Roadway Traffic Volumes.....	4.9-2
Table 4.9-4. Local Roadways within the Project Area	4.9-7
Table 4.9-5. Local Roadway Operations (Classifications, Volumes and Level of Service)....	4.9-8
Table 4.9-6. Existing Intersection Operations	4.9-8
Table 4.9-7. Anticipated Project Trip Generation	4.9-15
Table 4.9-8. Existing Plus Project Roadway Operations	4.9-16
Table 4.9-9. Existing Plus Project a.m. Peak Hour Intersection Operations	4.9-17
Table 4.9-10. Existing Plus Project p.m. Peak Hour Intersection Operations	4.9-18

Table 5.1-1. Cumulative Development Summary5-3

Table 5.2-1. Project Emissions Relative to 2012 Emission Inventory for South Central Coast Air Basin5-21

Table 5.2-2. Emission Inventory South Central Coast Air Basin 2020 Projection.....5-22

Table 5.2-3. Emission Inventory South Central Coast Air Basin – Santa Barbara County Portion 2020 Projection5-22

Table 5.2-4. 2020 Emissions Projections – Proposed Project and Santa Barbara County Air Pollution Control District.....5-23

Table 5.10-1. Cumulative Plus Project Roadway Operations5-29

Table 5.10-2. Cumulative Plus Project a.m. Peak Hour Intersection Operations.....5-30

Table 5.10-3. Cumulative plus Project p.m. Peak Hour Intersection Operations.....5-31

LIST OF FIGURES

Figure 1.2-1. Topographic Location Map	1-3
Figure 1.2-2. Oil Field Boundaries	1-5
Figure 1.2-3. Aera Energy LLC-Owned Parcels	1-7
Figure 1.2-4. Historical Timeline and Production	1-11
Figure 1.2-5. Historical Aerial Photograph	1-13
Figure 1.2-6. County Land Use Designations	1-15
Figure 1.2-7. Site Photographs	1-17
Figure 1.2-8. Site Photographs	1-19
Figure 1.2-9. Site Photographs	1-21
Figure 1.2-10. DOGGR Well Map	1-23
Figure 1.2-11. Adjacent Land Uses	1-25
Figure 1.3-1. Project Overview	1-31
Figure 1.3-2. Cyclic Steam Injection	1-33
Figure 1.3-3. Pattern Steam Flood.....	1-35
Figure 1.6-1. Annual Well Pad and Road Development Overview	1-61
Figure 2.1-1 Generalized Geologic Cross Section.....	2-3
Figure 2.2-1 Preliminary Grading Plan.....	2-7
Figure 2.2-2. Project Site Entrances	2-17
Figure 2.4-1. Block Flow Diagram.....	2-25
Figure 2.4-2. Production Group Station Plot Plan.....	2-27
Figure 2.4-3. Intra-field Pipelines	2-29
Figure 2.4-4. Central Processing Facility Plot Plan.....	2-33
Figure 2.4-5. Steam Generation Site Plot Plan.....	2-41
Figure 2.5-1. Building Site Plan	2-45
Figure 2.5-2. Example Architectural Rendering	2-47
Figure 2.6-1 Proposed Natural Gas Import Pipeline Route	2-51
Figure 2.6-2. Typical Isolation Valve Station.....	2-53
Figure 2.6-3. Typical Meter Set Assembly	2-55
Figure 2.6-4. Proposed Electrical Line Route	2-57
Figure 2.8-1. Regional Roadway Map	2-71
Figure 2.8-2. Proposed Trucking Routes to Highway 101 Detail	2-73
Figure 3.1-1. Construction Schedule Overview	3-3
Figure 3.3-1. Project Site Access and Staging Areas	3-7
Figure 3.4-1. Central Processing Facility- Equipment Installation by Phase.....	3-9
Figure 3.4-2. Steam Generation Site- Equipment Installation by Phase.....	3-11

Figure 3.5-1. Well Types and Locations	3-15
Figure 3.5-2. Typical Well Surface Equipment.....	3-17
Figure 3.5-3. Typical Rig Layout	3-19
Figure 3.5-4. Well Schematics for Oil Production and Steam Injection Wells.....	3-25
Figure 3.6-1. Typical Pipeline Construction	3-31
Figure 3.6-2. Typical Jack and Bore Work Area	3-33
Figure 3.6-3. Typical Horizontal Directional Drill (First Pass).....	3-35
Figure 3.6-4. Typical Horizontal Directional Drill (Second and Third Pass)	3-37
Figure 3.6-5. Electrical Transmission Installation- Staging and Laydown Areas	3-43
Figure 3.6-6. Typical Conductor Stringing	3-45
Figure 4.1-1. 2007 Unincorporated Santa Barbara County Greenhouse Gas Emissions by Sector.....	4.1-9
Figure 4.1-2. Potential Sensitive Receptor Locations	4.1-37
Figure 4.2-1. Legacy Fill Areas	4.2-5
Figure 4.2-2. Santa Barbara County Fatality and Injury Risk Thresholds.....	4.2-9
Figure 4.2-3. Process of Developing a Quantitative Risk Analysis	4.2-13
Figure 4.2-4. Public Risk of Injury Profile in Comparison to County Thresholds of Significance	4.2-23
Figure 4.2-5. Public Risk of Fatality Profile in Comparison to County Thresholds of Significance	4.2-25
Figure 4.3-1. Water Well Locations.....	4.3-5
Figure 4.4-1. Sensitive Habitats within Project Vicinity	4.4-19
Figure 4.4-2. Waters and Wetlands within the Biological Survey Areas	4.4-27
Figure 4.4-3. Biological Field Survey Results for the Project Site - A	4.4-31
Figure 4.4-3. Biological Field Survey Results for the Project Site - B	4.4-33
Figure 4.4-3. Biological Field Survey Results for the Project Site - C.....	4.4-35
Figure 4.4-3. Biological Field Survey Results for the Project Site - D.....	4.4-37
Figure 4.4-3. Biological Field Survey Results for the Project Site - E	4.4-39
Figure 4.4-3. Biological Field Survey Results for the Project Site - F	4.4-41
Figure 4.4-4. Biological Field Survey Results for the Pacific Gas and Electric Biological Survey Area.....	4.4-45
Figure 4.4-5. Biological Field Survey Results for the Southern California Gas Biological Survey Area - A.....	4.4-47
Figure 4.4-5. Biological Field Survey Results for the Southern California Gas Biological Survey Area - B.....	4.4-49
Figure 4.4-5. Biological Field Survey Results for the Southern California Gas Biological Survey Area - C.....	4.4-51

Figure 4.4-5. Biological Field Survey Results for the Southern California Gas Biological Survey Area - D.....	4.4-53
Figure 4.4-5. Biological Field Survey Results for the Southern California Gas Biological Survey Area - E.....	4.4-55
Figure 4.4-5. Biological Field Survey Results for the Southern California Gas Biological Survey Area - F.....	4.4-57
Figure 4.4-5. Biological Field Survey Results for the Southern California Gas Biological Survey Area - G.....	4.4-59
Figure 4.4-5. Biological Field Survey Results for the Southern California Gas Biological Survey Area - H.....	4.4-61
Figure 4.4-5. Biological Field Survey Results for the Southern California Gas Biological Survey Area - I.....	4.4-63
Figure 4.4-5. Biological Field Survey Results for the Southern California Gas Biological Survey Area - J.....	4.4-65
Figure 4.4-6. Special-Status Plants within the Biological Survey Areas.....	4.4-73
Figure 4.4-7. Special-Status Wildlife within the Biological Survey Areas.....	4.4-83
Figure 4.4-8. Oak Inventory Study Areas.....	4.4-101
Figure 4.4-9. California Tiger Salamander Upland Habitat Suitability Model.....	4.4-111
Figure 4.5-1. Topographic Map of the Project Site.....	4.5-3
Figure 4.5-2. Hazards Identification Map.....	4.5-5
Figure 4.5-3. Regional Fault Map.....	4.5-9
Figure 4.5-4. Faulting at the Project Site.....	4.5-11
Figure 4.5-5. Proposed Disturbance Areas in Relation to Slopes at the Project Site.....	4.5-17
Figure 4.7-1. Fire Zones in Relation to Project Site.....	4.7-8
Figure 4.8-1. Ambient Noise Measurement Locations and Noise Sensitive Receivers.....	4.8-7
Figure 4.8-2. Ambient Noise Measurement Locations and Noise Sensitive Receivers Along Project Travel Routes.....	4.8-9
Figure 4.9-1 - Proposed Trucking Routes to Highway 101 Detail.....	4.9-3
Figure 4.9-2 – Regional Roadway Map.....	4.9-5
Figure 4.10-1. Existing Visual Setting A.....	4.10-3
Figure 4.10-2. Existing Visual Setting B.....	4.10-5
Figure 4.10-3. Visual Simulation Photo Location.....	4.10-9
Figure 4.10-4. Visual Simulation 1 - Existing.....	4.10-11
Figure 4.10-5. Visual Simulation 1 - Proposed.....	4.10-13
Figure 4.10-6. Visual Simulation 2 - Existing.....	4.10-15
Figure 4.10-7. Visual Simulation 2 - Proposed.....	4.10-17
Figure 4.10-8. Visual Simulation 3 - Existing.....	4.10-19
Figure 4.10-9. Visual Simulation 3 - Proposed.....	4.10-21

Figure 4.10-10. Visual Simulation 4 – Existing4.10-23
Figure 4.10-11. Visual Simulation 4 – Proposed.....4.10-25
Figure 5.1-1. Cumulative Projects Overview.....5-15
Figure 5.1-2. Cumulative Projects Detailed View 1.....5-17
Figure 5.1-3. Cumulative Projects Detailed View 2.....5-19

PAGE LEFT INTENTIONALLY BLANK