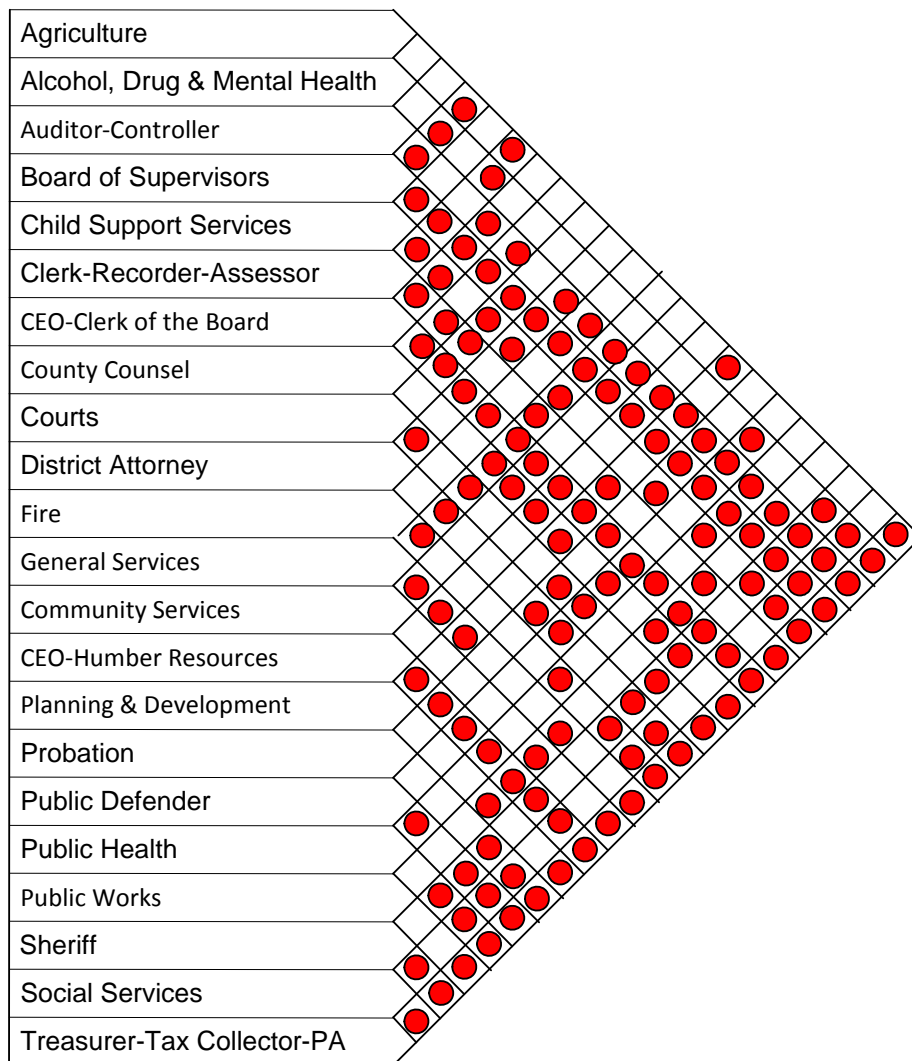


Appendix E: Adjacency Requirements

The building that county agencies occupy should positively reinforce and facilitate the performance of the operations that they house. A facility should go beyond simply containing activities and should actually contribute to the productivity of county organizations. Space adjacency analysis can help us understand a wide range of issues related to how county agencies operate including work flow, circulation, proximity of functionally related spaces, security maintenance, human factors furniture and equipment layout. The techniques of space adjacency analysis may apply to any size situation and focuses on the work activity as well as the external forces that act upon the internal activity. There are several levels of space adjacency analysis; this report takes the broad view.

The chart below can be “read” by connecting the department names diagonally at the dots. A ● indicates an adjacency requirement between the two departments. Further detailed adjacency analysis may need to be conducted on a project-by-project basis.



This Page Intentionally Blank