



Agenda

- Workgroup objectives and process
- Overview of IRWM related climate change policies and legislation
- Climate change standard for IRWM Plan and Implementation Grant
- Workgroup deliverables inclusion in IRWM Plan
- Approach to deliverables

Workgroup Objectives and Process

- Provide input on potential climate change impacts
- Identify Region's climate change vulnerabilities
- Develop recommendations for prioritization of vulnerabilities
- Recommend adaptation strategies to address vulnerabilities
- Address how to gather data and analyze prioritized vulnerabilities
- Develop recommendations for consideration of climate change in project prioritization

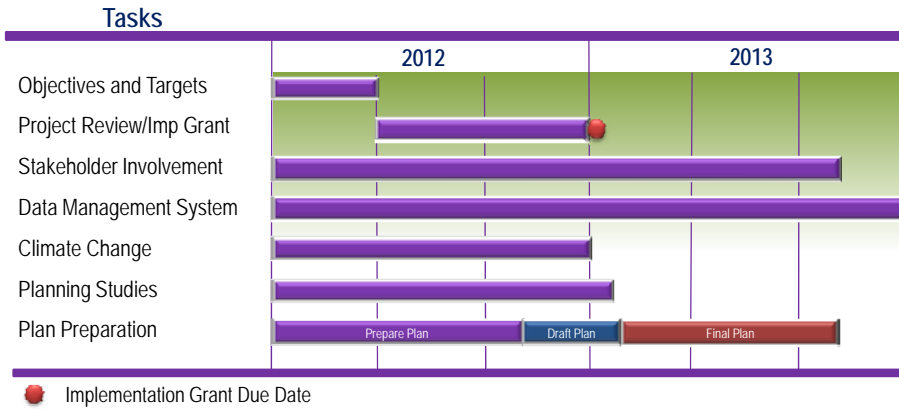


The Importance of IRWM Planning

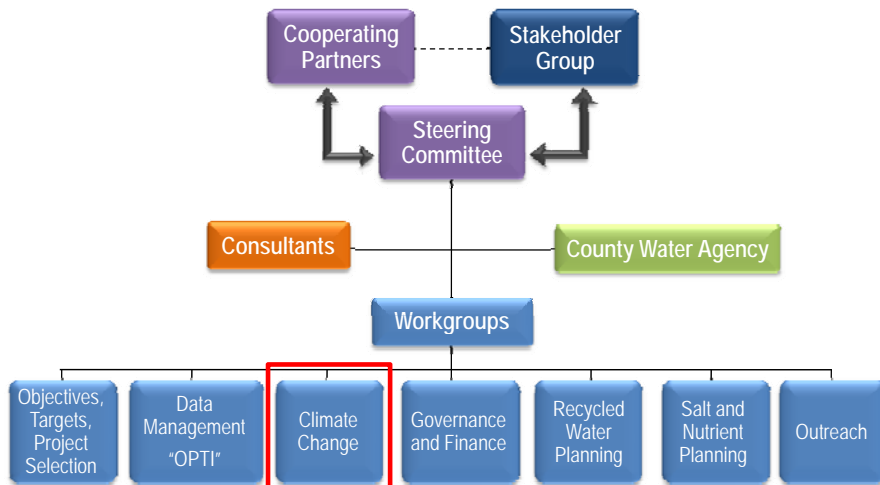
- What is IRWM Planning?
- Our IRWM History
- What we have accomplished
- Why IRWM matters
 - Grant funding
 - Increase collaboration
 - Forum to deal with challenges and conflicts
 - Proactively communicate needs to State/Feds
 - Influence other planning efforts
 - Expand regional database



Timeline 2012-2013



Organization



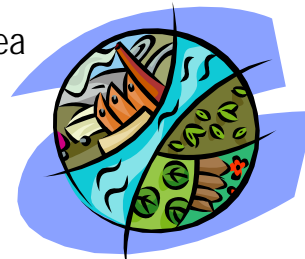
Technical Workgroups



RMC

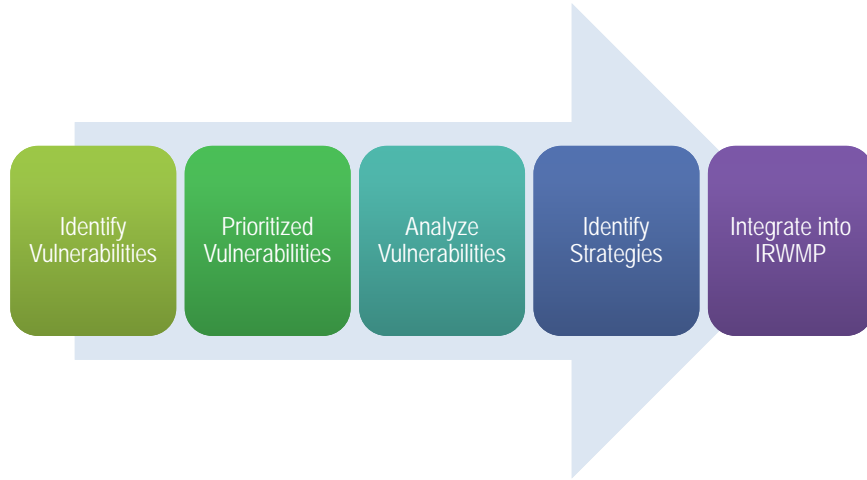
IRWM related Climate Change Policy and Legislation

- **EO S-3-05 & California Global Water Solutions Act of 2006 (AB32):** Laid foundation for CA's response to climate change by formally establishing emissions reductions goals
- **SB 97:** Initiated formal changes to CEQA Guidelines that provides guidance for the way climate change is analyzed in CEQA documents
- **EO S-13-08:** Directed preparation of a sea level rise impact study, a transportation systems vulnerability assessment, and preparation of the California Climate Adaptation Strategy



RMC

Climate Change Standard for IRWM



RMC

Workgroup Deliverables

- Listing of potential climate change impacts on Region
- Completion of Vulnerability Assessment Checklist
- Prioritized list of Region's climate change vulnerabilities
- Adaptation strategies to address vulnerabilities
- Recommendations for data gap analysis
- Recommendations for consideration of GHG emissions in project prioritization process

RMC

IRWM Plan 2013 – Inclusion of Climate Change

- Update to 2006 Santa Barbara County IRWM Plan
- IRWM Plan Standards
 - Governance
 - Regional Description
 - Objectives
 - Resource Management Strategies
 - Integration
 - Project Review Process
 - Impact and Benefit
 - Plan Performance and Monitoring
 - Data Management
 - Finance
 - Technical Analysis
 - Relation to Local Water Planning
 - Relation to Local Land Use Planning
 - Stakeholder Involvement
 - Coordination



IRWM Plan 2013 – Inclusion of Climate Change

- Update to 2006 Santa Barbara County IRWM Plan
- IRWM Plan Standards
 - Governance
 - **Regional Description**
 - **Objectives**
 - **Resource Management Strategies**
 - Integration
 - **Project Review Process**
 - Impact and Benefit
 - **Plan Performance and Monitoring**
 - Data Management
 - Finance
 - Technical Analysis
 - **Relation to Local Water Planning**
 - **Relation to Local Land Use Planning**
 - Stakeholder Involvement
 - **Coordination**



IRWM Plan - Regional Description

- How does the region description incorporate information regarding potential regional vulnerabilities to the effects of climate change that may occur over the planning horizon?
- Include:
 - Identification of climate change impacts
 - Vulnerability assessment



IRWM Plan - Objectives

- Develop objectives that consider the following:
 - Adapting to climate change. May include:
 - Address adapting to changes in the amount, intensity, timing, quality and variability of runoff and recharge
 - Consider the effects of sea level rise on water supply conditions and identify suitable adaptation measures
 - Reducing emissions. May include:
 - Reduce energy consumption, especially the energy embedded in water use
 - Consider the strategies adopted by CARB in its AB 32 scoping plan
 - Consider options for carbon sequestration
- Include metrics for measurement the progress of these objectives



IRWM Plan – Resource Management Strategies

- Identify and implement “No-Regrets” Adaptation Strategies to the general effects of climate change (e.g. meadow and forest restoration, flood plain protection, water use efficiency)
- Identify and implement, using vulnerability assessments and tools, Adaptation Strategies that address region-specific climate change impacts



IRWM Plan – Project Review Process

- Describe how the IRWM Plan considers or will consider climate change vulnerabilities as a factor in the project review process
- Describe how the IRWM Plan considers GHG emissions as a factor in the project review process. Are both construction and operational GHG considerations included?



IRWM Plan – Plan Performance and Monitoring

- Is or will there be an adaptive management process in the plan to utilize new information (e.g. climate change vulnerabilities) to potentially modify plan objectives, use of RMSs, or project review processes



IRWM Plan – Relation to Local Water Planning

- Consider and incorporate water management issues and climate change adaptation and mitigation strategies from local plans into the IRWM Plan



IRWM Plan – Relation to Local Land Use Planning

- Describe the current relationship between local land use planning entities and water management entities in order to manage multiple water demands, adapt water management systems to climate change, and potentially offset climate change impacts
- Include climate change data gap analysis



IRWM Plan – Coordination

- RWMGs should stay involved in CNRA's California Adaptation Strategy process to help shape the document through their participation
- Agencies that are part of an IRWM effort should consider joining the California Climate Action Registry (CCAR)





Contact Information

Kathy Caldwell – 310.566.6460
kcaldwell@rmcwater.com

RMC
Water and the Environment

Dawn Flores – 310.566.6460, dflores@rmcwater.com
Jane Gray - 805.963.0651 x 3531, jgray@dudek.com
Rob Almy - 805 448.6815, ralmy@geiconsultants.com

Website link: <http://www.countyofsb.org/pwd/pwwater.aspx?id=16852>