



Shipping Waste Out of County

Economic Analysis & Review of Exporting
Our Community's Waste

Challenges Not Addressed

- Legal Liability/Exposure
- Environmental Impacts
- Traffic Impacts on Neighboring Communities
- Facility Permit Revisions



Exporting Options



- Trucking & Rail
 - Tipping Fees
 - Transportation Costs
 - Necessary Infrastructure

Trucking Our Waste



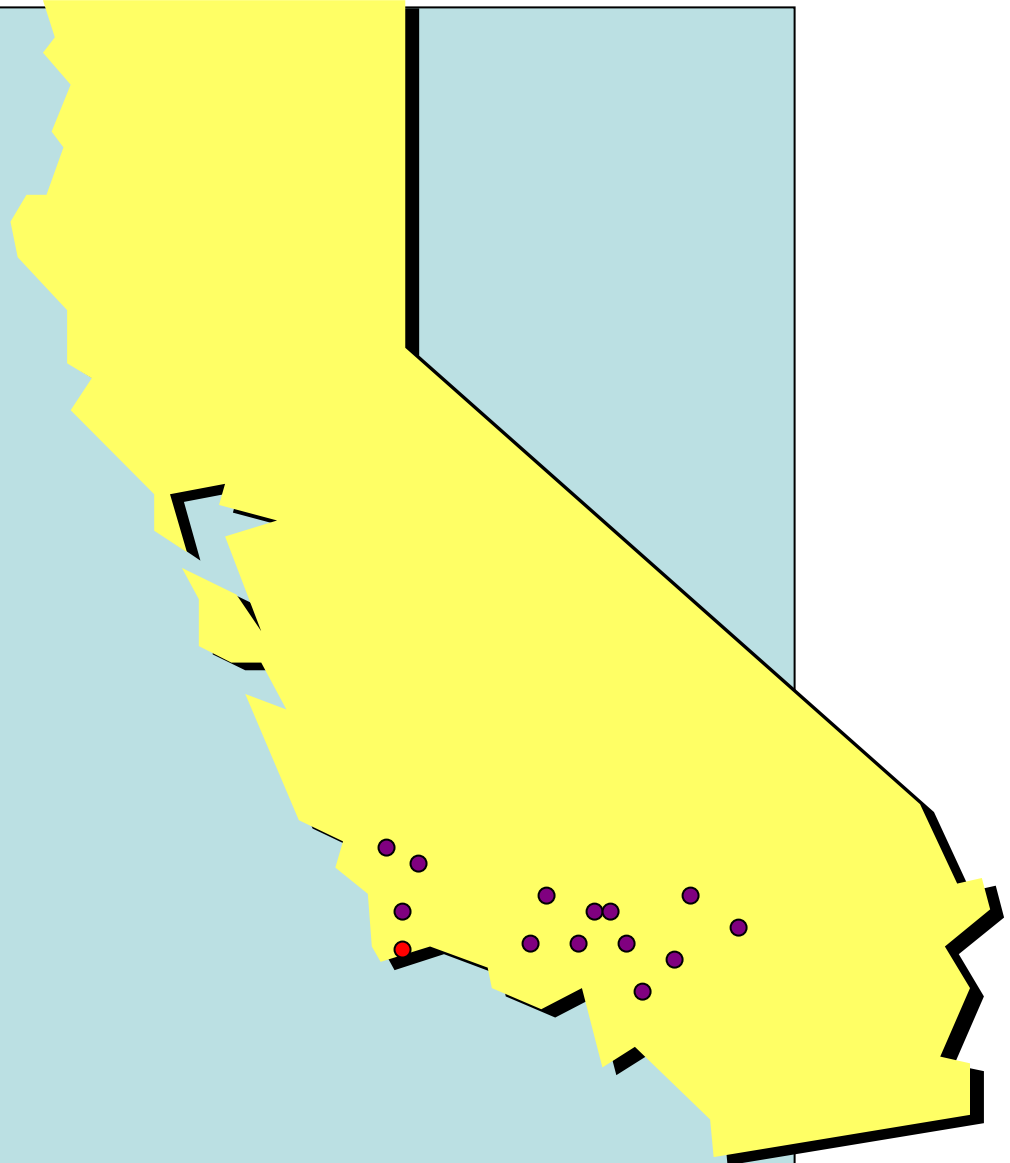
Trucking Our Waste

Studied 35 Southern
California Landfills

Counties Included

- Kern
- San Luis Obispo
- Los Angeles
- Orange
- Imperial
- San Diego
- Ventura
- San Bernardino
- Riverside

12 Landfills Accept
Out-of-County Waste



Trucking Our Waste

3 Landfills Are given
closer attention

Simi Valley (WMI)

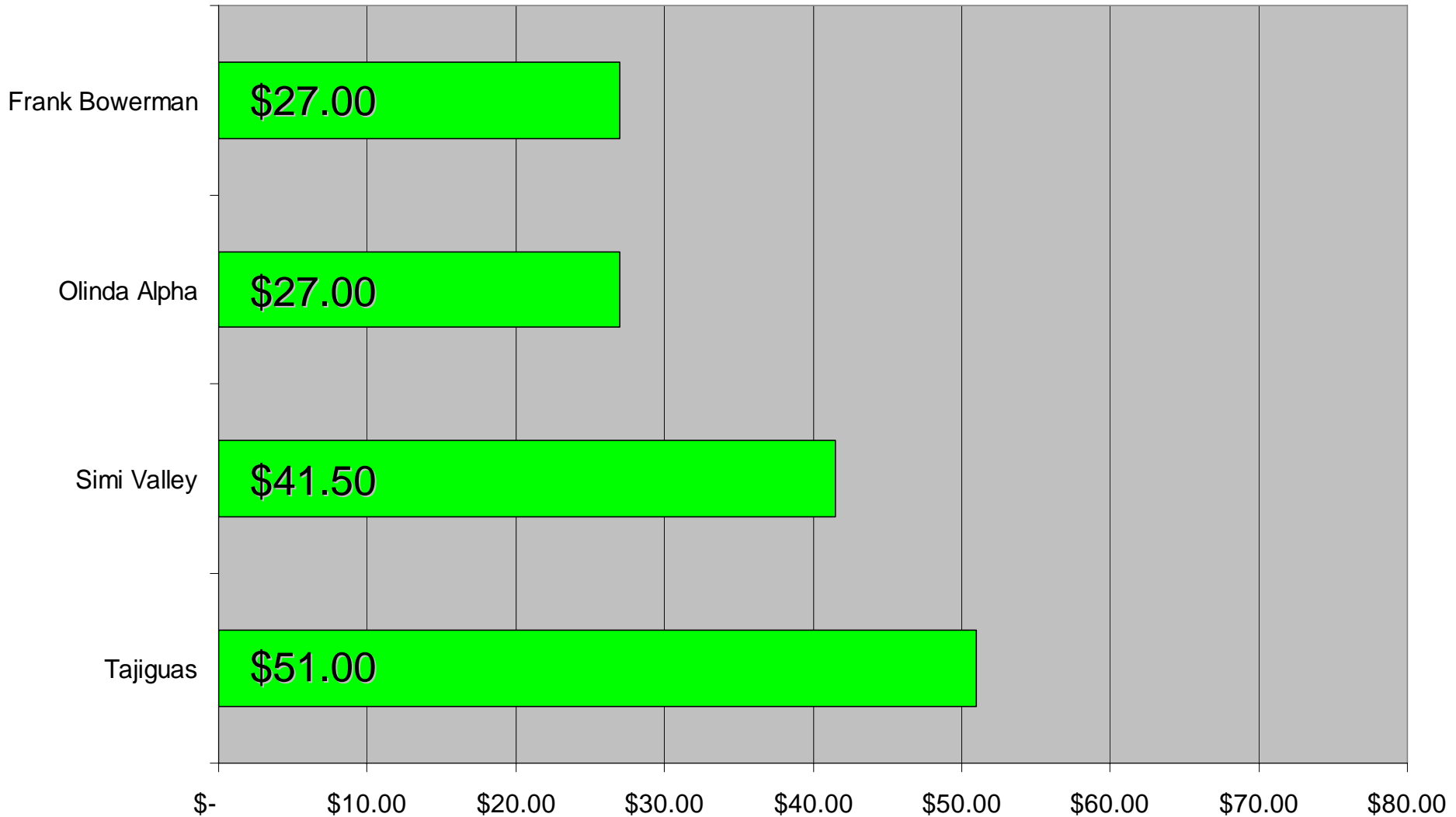
Olinda Alpha (Orange County)

Frank Bowerman (Orange County)



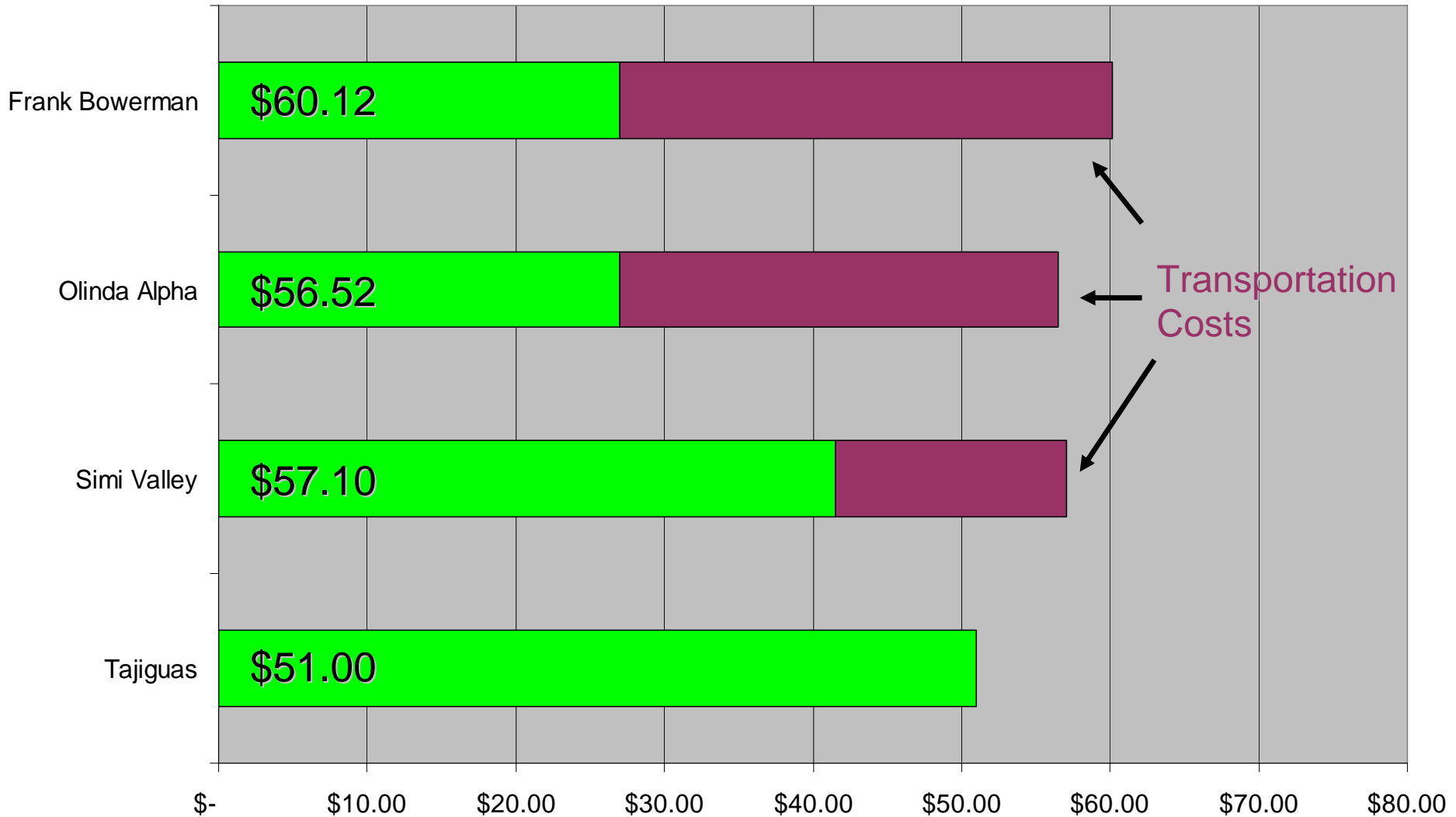
Trucking – Cost Comparison

TIPPING FEES ONLY



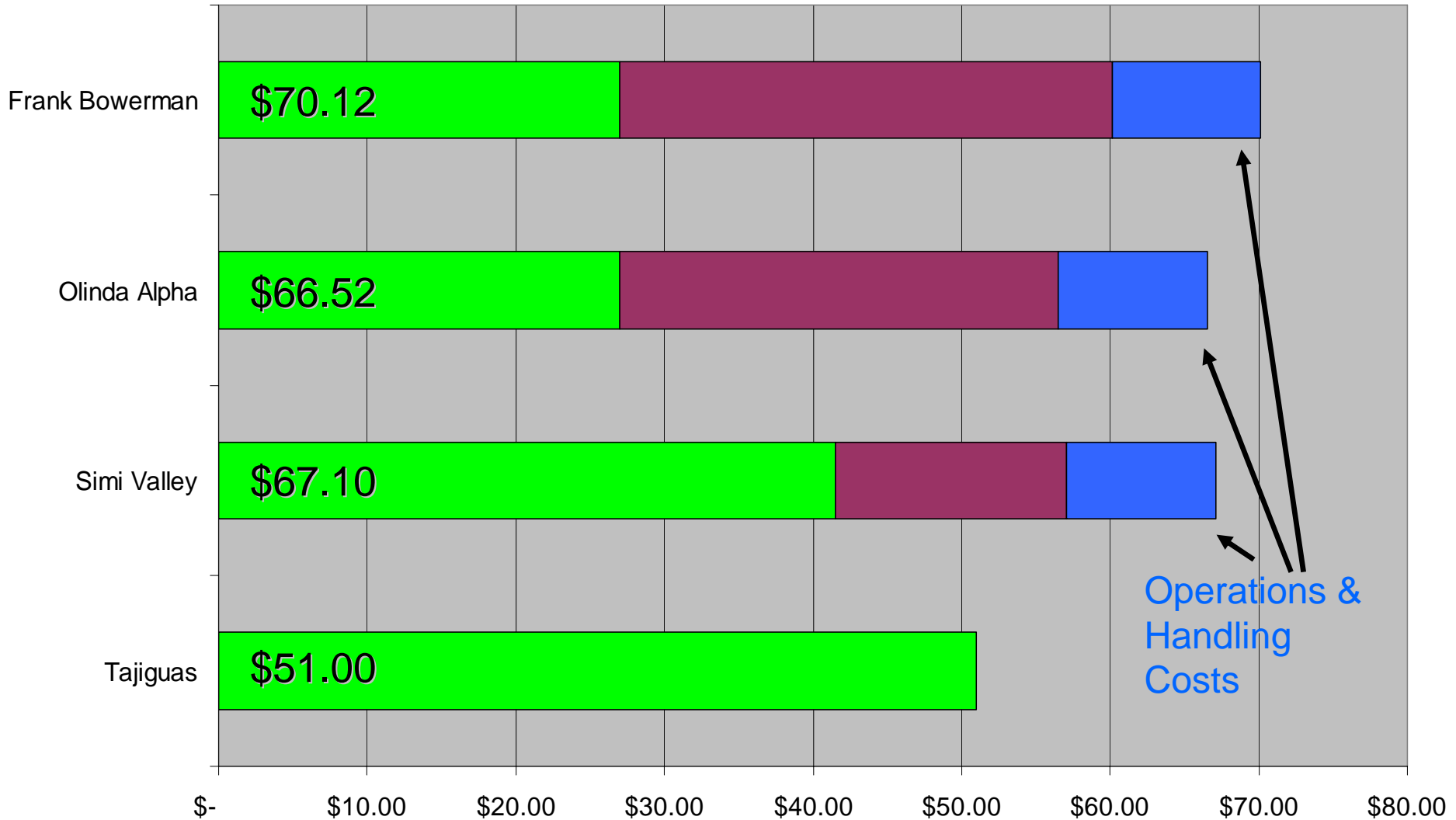
Trucking – Cost Comparison

TIPPING FEES & TRANSPORTATION



Trucking – Cost Comparison

TIPPING FEES, TRANSPORTATION & OPERATIONS



Trucking – Distance Comparison

- Simi Valley
(Ventura County)
65 Miles
- Olinda Alpha
(Orange County)
123 Miles
- Frank Bowerman
(Orange County)
138 Miles



Trucking – Reliability

- Greater Distance =
Greater Financial
Uncertainty
 - Fuel Costs



Trucking – Reliability

- Greater Distance =
Greater Financial
Uncertainty
 - Traffic Congestion



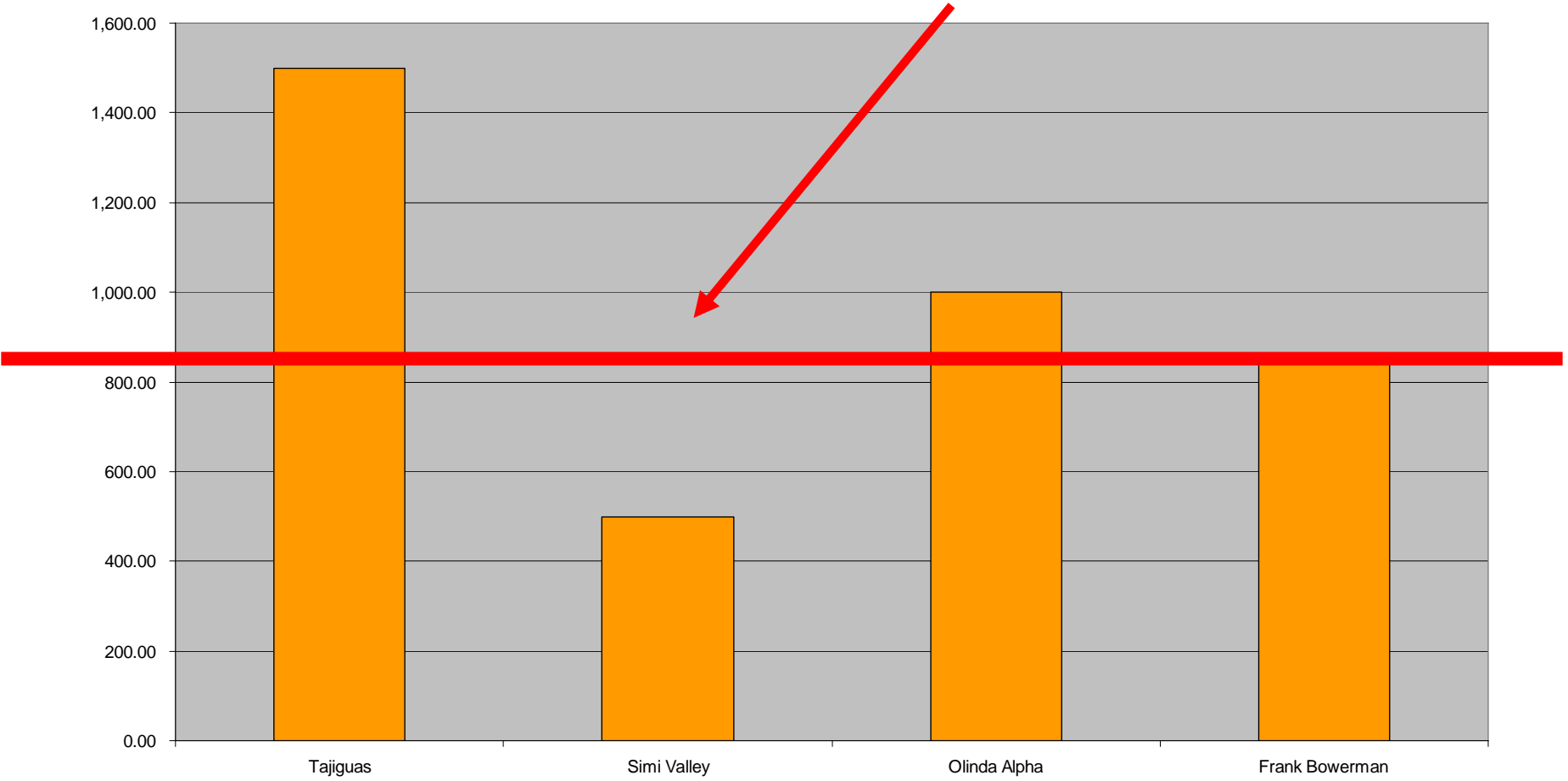
Trucking – Reliability

- Greater Distance =
**Greater Financial
Uncertainty**
 - Increased need for resources
 - Drivers
 - Trucks
 - Mechanics
 - Trucking facilities



Trucking – Capacity Comparison

OUR WASTE GENERATION PER DAY



Rail Hauling Our Waste



Rail Hauling Our Waste

- Tipping Fees
 - \$60.00 - \$80.00
 - Per Ton



1/11/23, 009-001, 05030305



Transportation Costs = **\$18.00** Per Ton

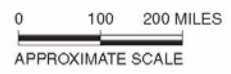


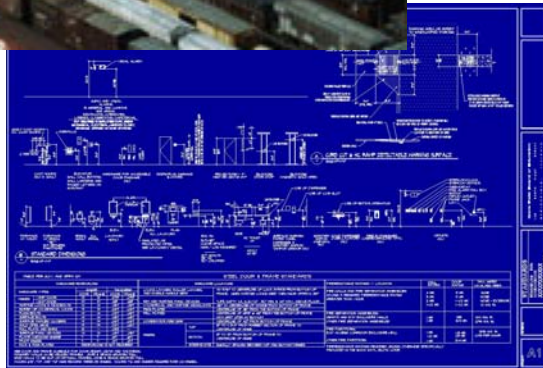
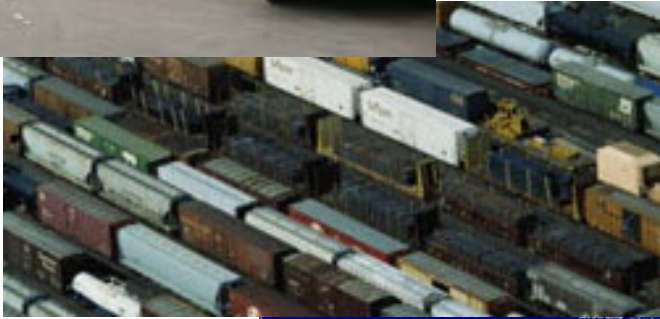
FIGURE 1

EXISTING AND PROPOSED RAIL ACCESSIBLE LANDFILLS

SANTA BARBARA COUNTY
RAIL-HAUL ANALYSIS
SANTA BARBARA, CALIFORNIA



Rail Hauling Our Waste



- Capital Costs
 - Difficult to Accurately Calculate
 - New Transfer Station
 - Near urban Center
 - Rail capable near existing coastal route
 - Additional equipment and structures

Rail Hauling Our Waste

- Facility Cost
 - **\$15** per ton covers facility capital (Avocet memo)
 - Assumes siting in LA Basin
 - Assumes LA Basin land costs
 - Economies of Scale (LA vs. SB)



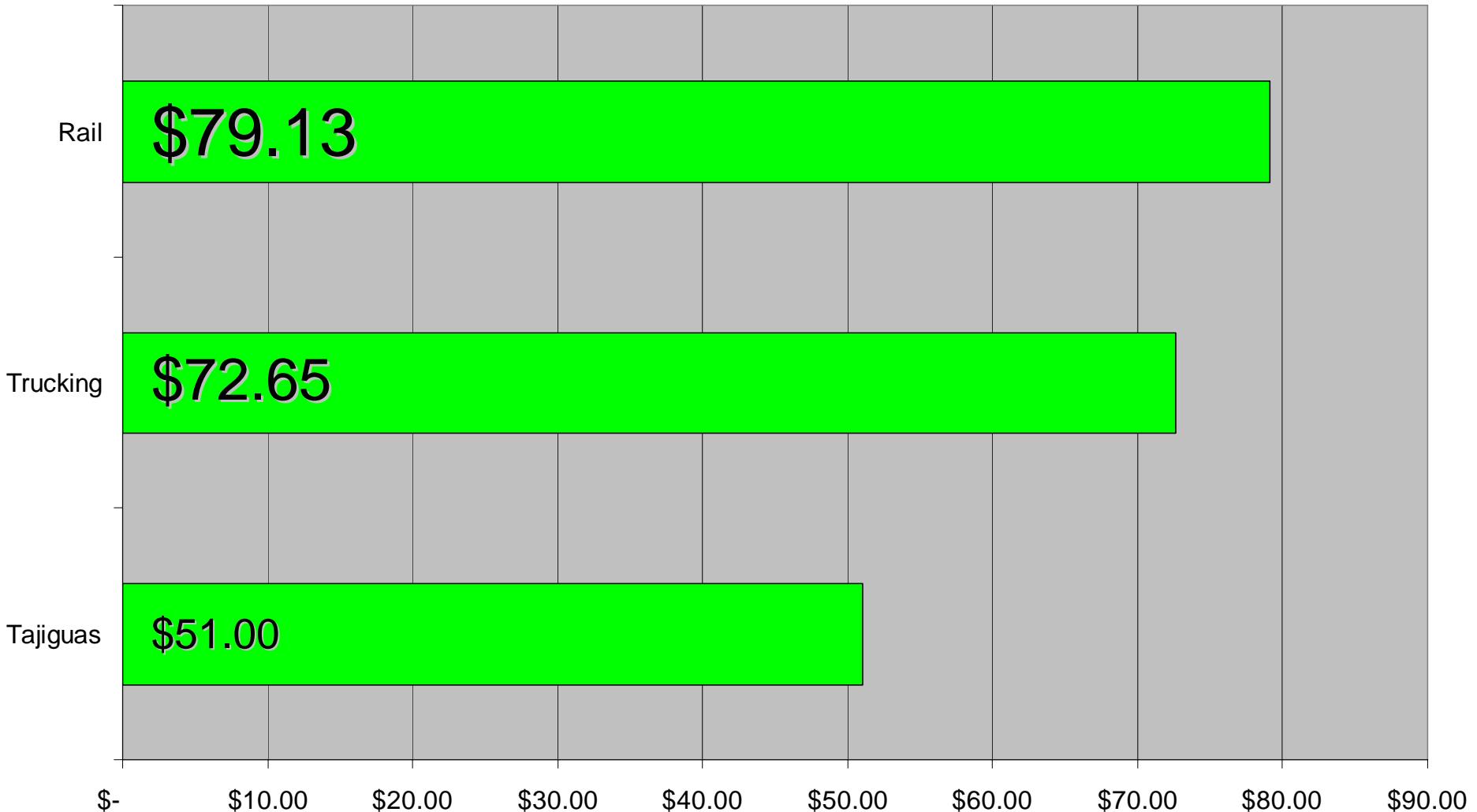
Additional Cost Considerations



- Comparison does not include
 - Mandated Closure Costs (\$6.13 Per Ton)

Costs in Summary

Minimum Cost Per Ton for Rail and Trucking (Includes closure costs)

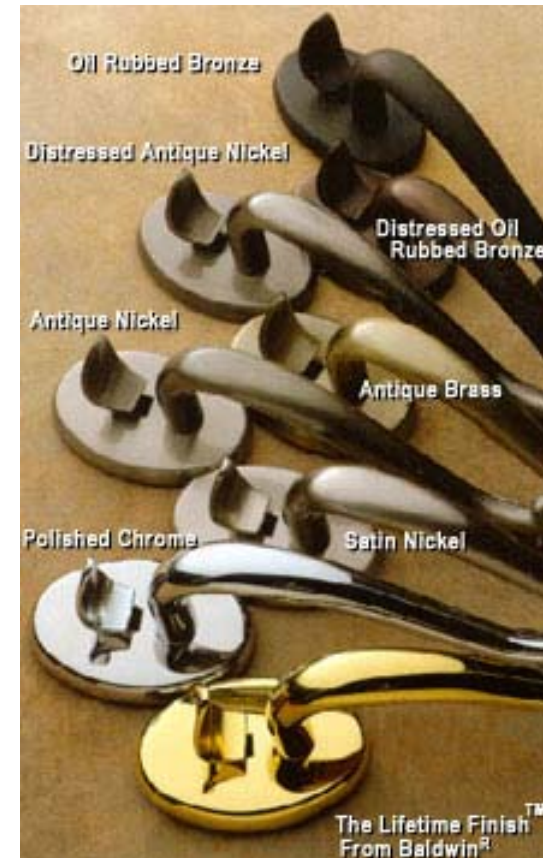


North County Options

Waste Export Considered in 1996

Current Landfill Capacity Full in 2017

New Landfill Siting Is Ongoing



Waste Export Considered in 1996

-
- **Background:**



Regulatory Enforcement
Escalation cost for closure and remediation
Export 25% of waste stream considered

- **Decision Not to Export Was Based On :**

Environmental Liability
Financial Concerns
Loss of Local Control

Current Landfill Capacity Full in 2017

Current average rate \$45/ton in Santa Maria Vs. Export rate of \$53/ton

- No pending regulatory enforcement in Santa Maria
- State of the art liner system installed
- Expedited landfill closure program implemented
- Fully funded closure account of \$18 million
- City Council deferred rate increases for the last 7 years



Local revenues accommodate value added services

(to landfill and city refuse collection system rate payers)

- Landfill opens 7 days a week w/tiered fee structure (\$7.00-\$69.90/ton) to minimize illegal dumping;
- Free household hazardous and electronic waste collection programs;
- City residents pick their own free landfill days twice annually;
- Free residential and commercial curbside recycling programs;
- Free city street sweeping;
- Free disposal for qualified non-profit groups



New North County Landfill Siting Is Ongoing

Mission Statement:

To develop a high quality and efficient solid waste disposal and waste management facility to serve the Santa Maria Valley Wasteshed.

Summary of Tasks:

Task I. Develop service MOU for subgroup participants

Task II. Procure landfill site lease and/or option agreements w/ willing land owners

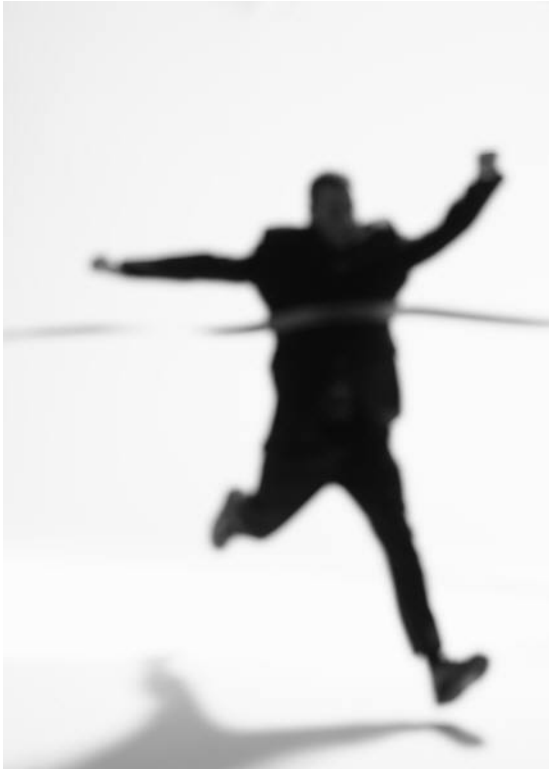
Task III. Perform feasibility and due-diligence studies

Task IV. Prepare permitting documents

Task V. Construct new landfill to serve North County



TAC CONCLUSIONS



- No Financially Competitive Options
- Monitor Alternatives



THANK YOU

Questions?