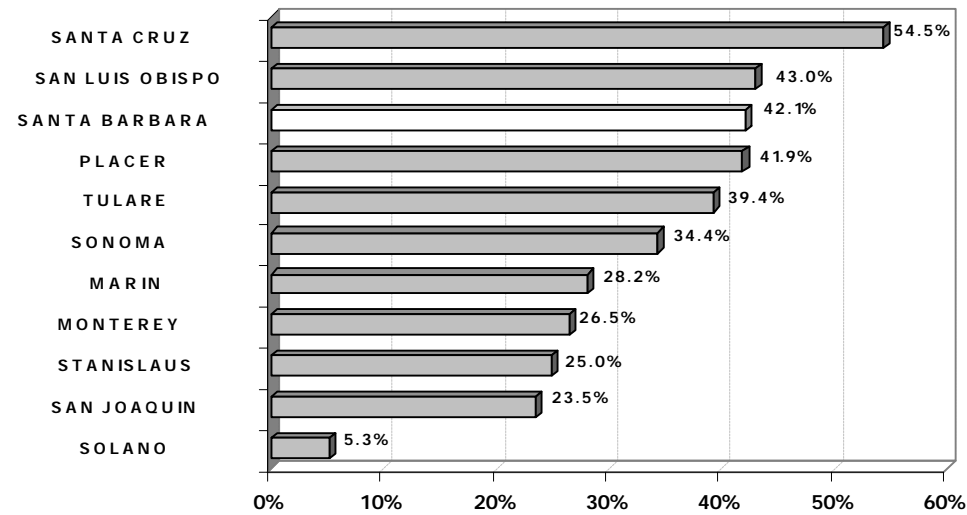


# Appendix B: County Population Chart

## California Counties Ranked by Population

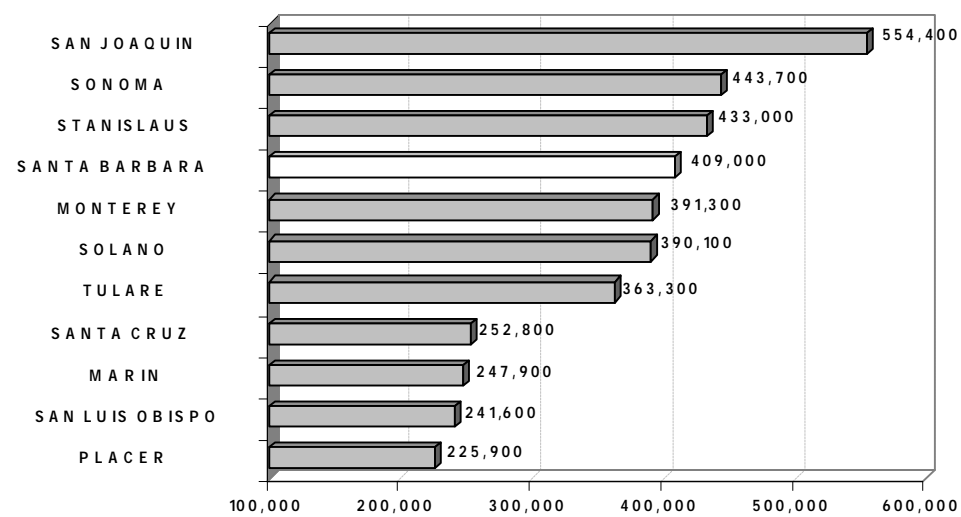
At January 1999, the estimated population of Santa Barbara was 409,000, an increase of approximately 1.5 % over the estimated population of January 1998. Of California's 58 counties, Santa Barbara as of 1999 ranked 18<sup>th</sup> in terms of population.

Percent of Population which receives County Municipal Services



Source: California Department of Finance, Demographic Research Unit

Population of Benchmark Counties at January 1, 1999



Source: California Department of Finance, Demographic Research Unit

Rank	County	01/01/1998	01/01/1999	Percent Change	Rank	County	01/01/1998	01/01/1999	Percent Change
1	LOS ANGELES	9,587,300	9,757,500	1.8	30	EL DORADO	148,800	150,800	1.3
2	SAN DIEGO	2,795,800	2,853,300	2.1	31	IMPERIAL	143,000	142,700	-0.2
3	ORANGE	2,734,500	2,775,600	1.5	32	KINGS	121,000	128,300	6.0
4	SANTA CLARA	1,686,400	1,715,400	1.7	33	HUMBOLDT	126,000	128,100	1.7
5	SAN BERNARDINO	1,631,500	1,654,000	1.4	34	NAPA	121,900	124,600	2.2
6	RIVERSIDE	1,441,000	1,473,300	2.2	35	MADERA	114,100	115,800	1.5
7	ALAMEDA	1,413,400	1,433,300	1.4	36	NEVADA	89,200	89,600	0.4
8	SACRAMENTO	1,156,500	1,177,800	1.8	37	MENDOCINO	86,100	87,100	1.2
9	CONTRA COSTA	906,500	916,400	1.1	38	SUTTER	76,400	76,700	0.4
10	FRESNO	781,900	793,800	1.5	39	YUBA	60,800	60,400	-0.7
11	SAN FRANCISCO	783,400	790,500	0.9	40	TEHAMA	54,900	55,700	1.5
12	VENTURA	732,700	742,000	1.3	41	LAKE	55,100	55,300	0.4
13	SAN MATEO	716,500	722,800	0.9	42	TUOLUMNE	52,500	53,100	1.1
14	KERN	637,200	648,400	1.8	43	SAN BENITO	46,950	47,850	1.9
15	SAN JOAQUIN	546,900	554,400	1.4	44	SISKIYOU	44,200	44,350	0.3
16	SONOMA	436,700	443,700	1.6	45	CALAVERAS	38,100	38,150	-0.8
17	STANISLAUS	428,300	433,000	1.1	46	AMADOR	33,300	34,050	2.3
<b>18</b>	<b>SANTA BARBARA</b>	<b>402,900</b>	<b>409,000</b>	<b>1.5</b>	47	LASSEN	33,650	34,050	1.2
19	MONTEREY	381,000	391,300	2.7	48	DEL NORTE	28,100	28,100	0.0
20	SOLANO	382,000	390,100	2.1	49	GLENN	26,850	26,950	0.4
21	TULARE	359,900	363,300	0.9	50	PLUMAS	20,450	20,450	0.0
22	SANTA CRUZ	249,000	252,800	1.5	51	COLUSA	18,600	18,550	-0.3
23	MARIN	244,100	247,900	1.6	52	INYO	18,300	18,250	-0.3
24	SAN LUIS OBISPO	236,400	241,600	2.2	53	MARIPOSA	16,000	16,100	0.6
25	PLACER	219,400	225,900	3.0	54	TRINITY	13,200	13,200	0.0
26	MERCED	203,200	206,900	1.8	55	MONO	10,550	10,800	2.4
27	BUTTE	199,100	201,900	1.4	56	MODOC	9,975	9,925	-0.5
28	SHASTA	164,100	165,400	0.8	57	SIERRA	3,340	3,220	-3.6
29	YOLO	155,500	158,800	2.1	58	ALPINE	1,190	1,190	0.0
<b>CALIFORNIA</b>							<b>33,225,655</b>	<b>33,773,485</b>	<b>1.6</b>

Source: California Department of Finance, Demographic Research Unit