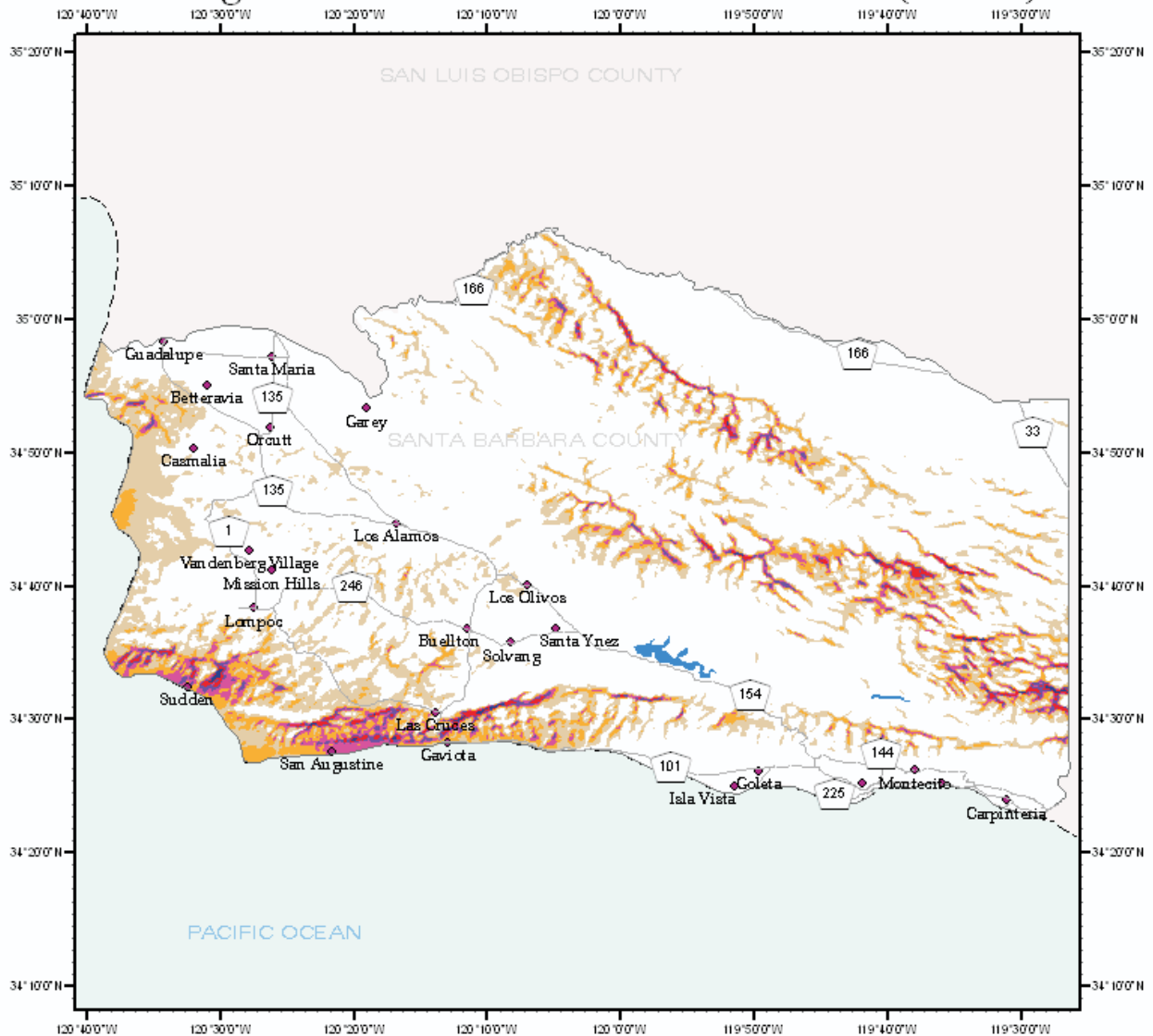


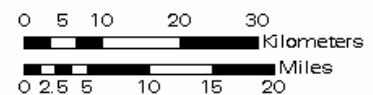
# Santa Barbara County

## Average Annual Wind Resource at 50m (164 ft)



### Wind Classifications

wind class	wind speed [m/s]	wind speed [mph]
1 Poor	0.0 - 5.6	0.0 - 12.5
2 Marginal	5.6 - 6.4	12.5 - 14.3
3 Fair	6.4 - 7.0	14.3 - 15.7
4 Good	7.0 - 7.5	15.7 - 16.8
5 Excellent	7.5 - 8.0	16.8 - 17.9
6 Outstanding	8.0 - 8.8	17.9 - 19.7
7 Superb	> 8.8	> 19.7



### Legend

- Major Water Bodies
- Cities and Towns
- Major Roads
- County Boundary
- State Boundary



Created by: Daniel Prull  
prull@me.berkeley.edu  
Created on: 3/26/06  
Renewable and Appropriate Energy Lab  
<http://rael.berkeley.edu>

**FIGURE 2-3**  
**AVERAGE ANNUAL WIND**  
**RESOURCE AT 50M (164 FT)**

LOMPOC WIND ENERGY PROJECT  
SANTA BARBARA COUNTY, CALIFORNIA

Source: CECSB.