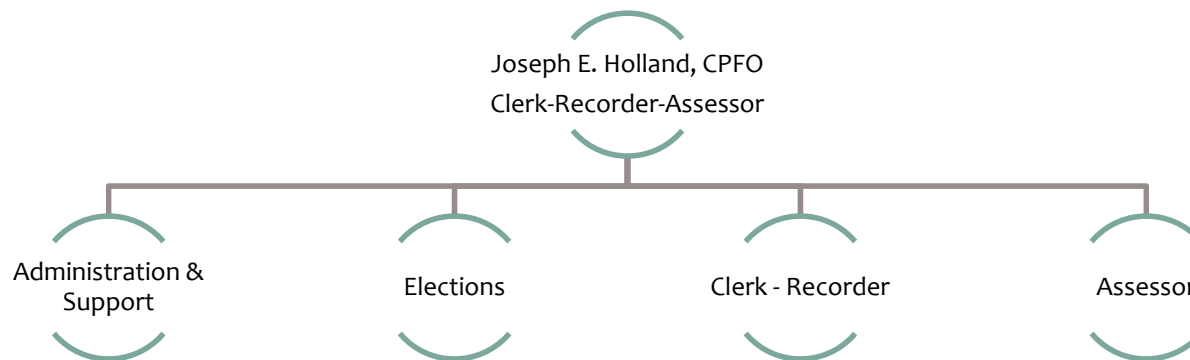


2015-2017 BUDGET WORKSHOP

Clerk-Recorder-Assessor



Summary

- Operating \$16,542,401
- Capital \$153,000
- General Fund \$10,493,000
- FTE's 96.4
- Service Level Reductions \$0
- Expansion Requests \$209,474 (2 FTEs)

Highlighted Department Services

- **Electronic Filing Campaign Finance Reports:** - Post campaign finance reports online for public viewing for filings received in Fiscal Year 2015-2016 and provide ability to file campaign finance reporting forms electronically in FY2016-17.
- **Postmark +3 Vote By Mail Ballots:** Accept vote by mail ballots as timely if received within three (3) days of the election and the ballots are postmarked as of Election Day. In absence of a postmark, the elections official may accept the ballot if it is signed and dated by election day and received within the three day period following the election.
- **Conditional Voter Registration** Permit eligible registrants to register to vote in the office of the elections official between the fourteenth day before the election through the close of polls on election day and cast a conditional provisional ballot to be processed once the registrant has been verified through the statewide database. New law becomes operative in January.

Updates/Special Issues

Property Tax Update

CEO Recommended Expansions

Description	FTE	GFC		Non-GFC
		Ongoing	One-time	
CEO Recommended Expansions				
None				

Expansions Deferred to Hearings

Description	FTE	GFC		Non-GFC
		Ongoing	One-time	
Presented at April Workshops				
Appraiser - This adjustment adds 1.0 FTE within Assessor Program to assist with property appraisals and timely development of the County's annual property tax roll.	1.0	\$100,452		
Admin Office Professionals - This adjustment adds 2.0 FTEs within Elections Program to limit the risk of liability to the County associated with continuing to have critical election functions understaffed and/or staffed with inexperienced seasonal employees. WITHDRAWN	2.0	\$123,956		
Mapping/GIS Analyst - this adjustment adds 1.0 FTE within Assessor & Elections Programs to support mapping/GIS functions to support increased workload and create better service delivery.	1.0	\$109,022		
Added Since April Workshops				
None				