

**SANTA BARBARA COUNTY
BOARD AGENDA LETTER**



Clerk of the Board of Supervisors
105 E. Anapamu Street, Suite 407
Santa Barbara, CA 93101
(805) 568-2240

Agenda Number:
Prepared on: 04/15/02
Department Name: General Services
Department No.: 063
Agenda Date: 5/21/02
Placement: Administrative
Estimate Time:
Continued Item: NO
If Yes, date from:

TO: Board of Supervisors

FROM: Ronald S. Cortez, Director, General Services
Phil Demery, Director, Public Works
Jennifer Briggs, Director, Parks
William Gillette, Agricultural Commissioner

STAFF CONTACT: Rory Lang, Water Agency
x 3545

SUBJECT: Green Team Annual Update and Integrated Pest Management Annual Update

Recommendation(s): That the Board of Supervisors:

- A. Accept the Green Team's April 2001 - April 2002 Annual Update.
- B. Accept the Grounds Management Committee 2002 Annual Update on the Integrated Pest Management Strategy.

Alignment with Board Strategic Plan:

The recommendation is primarily aligned with Goal No. 7. A Community that Fosters the Safety and Well-Being of Families and Children.

Executive Summary and Discussion:

I. Recommendation A.

On April 20, 1999 your Board accepted the project charter of the newly formed Green Team in honor of Earth Week. Since that time, the Green Team has made great strides in implementing programs, which

promote environmental stewardship in County operations. Attachment A describes the programs that have been implemented by the Green Team in fiscal year 2001/2002.

II. Recommendation B.

On April 4, 2000 your Board adopted the Integrated Pest Management Strategy and directed County Departments to implement the procedures for pesticide use outlined in that document. In alignment with IPM Strategy Requirement #13, "Tracking Progress and Evaluating the Program" . . .

. . . Each April the Grounds Management Committee will conduct a survey to gather information for the Annual Pesticide Summary. In addition, each department will submit a summary of the previous year's pilot project, a timeline for implementing viable changes at other sites, and plans for a new pilot project including changes that will be implemented in the next Fiscal Year and a timeline for their implementation. The Grounds Management Committee shall compile this information and any recommendations for future direction of the program and shall submit the report to the Board of Supervisors each May . . .

Attachment B provides an outline of the pilot projects implemented in 2001/2002 and for those planned for 2002/2003.

Mandates and Service Levels: Approval of Recommendations A and B will not change programs or service levels.

Fiscal and Facilities Impacts: Approval of Recommendations A and B will not have any fiscal or facilities impacts.

Special Instructions:

Concurrence:

Attachment A

On April 20, 1999 your Board accepted the project charter of the newly formed Green Team in honor of Earth Week. In the past three years, the Green Team has made great strides in implementing programs, which promote environmental stewardship in County operations. The Green Team has compiled the following information to provide an annual update for your review.

Commingled Recycling Programs

The County Green Team expanded the County's recycling program in 1999 to include commingled recycling in facilities where commingled service was available. Fifteen different County facilities have been added since 1999. The Solid Waste and Utilities Division worked with each separate facility to set up commingled recycling service with appropriate waste haulers. The Division purchased and supplied each facility with commingled recycling carts and boxes for each County facility added to the commingled recycling program. The Division then instructed employees in each facility how to participate in the program. The fifteen County facilities that were added to the commingled recycling program include the following locations:

Administration	105 E Anapamu Street	Santa Barbara
Agricultural Commissioners Office	263 Camino del Remedio	Santa Barbara
Boiler Room/Offices	265 Camino del Remedio	Santa Barbara
Childrens Medical Services	1111 Chapala Street, Suite 200	Santa Barbara
Department of Family Support Services	4 E Carrillo Street	Santa Barbara
Engineering	123 E Anapamu Street	Santa Barbara
Fire Department Administration	195 W Hwy 246	Buellton
Health Services Facility Building - 2 & 3	315 Camino del Remedio	Santa Barbara
Health Services Facility Building - 4	345 Camino del Remedio	Santa Barbara
Probation Department	117 E Carrillo Street	Santa Barbara
San Antonio Building/Public Health Department	300 N San Antonio Road	Santa Barbara
SB County Mental Health Facility	4444 Calle Real	Santa Barbara
Sheriff's Department/Coroners Office	4434 Calle Real	Santa Barbara
Sheriff's Department/Criminal Divison	751 E Burton Mesa Road	Lompoc
Solid Waste & Utilities Division	109 East Victoria Street	Santa Barbara
Superior Courthouse	1105 Santa Barbara Street	Santa Barbara
Veterans' Affairs Outpatient Clinic	4440 Calle Real	Santa Barbara

In January 2001, it was decided that General Services would take over the janitorial service contracts from the Solid Waste & Utilities Division in order to more closely monitor the County's recycling program. General Services maintains the contracts for trash service, and it seemed appropriate that General Services would maintain the contracts for recycling service as well. A Change Order was processed in May 2001 to transfer funds from the Solid Waste & Utilities Division to General Services.

There are approximately 137 buildings that are County facilities. The total amount of County facilities that have commingled recycling service is 73, which is equal to 53% of all County facilities. The total amount of County facilities that still need recycling service is 64. In many cases commingled recycling service is difficult to implement due to limited access and leasing situations. The Solid Waste & Utilities Division is

currently working with the County Sheriff's Department and County Fire Department to implement commingled recycling service at the County Jail and at all County Fire Stations and the Fire Department's Administration building. In addition to these locations, there are still nearly 35 County facilities that can be added to the commingled recycling program. Each situation is unique, and a great deal of coordinating is necessary to implement these programs. The Division will soon be working to add commingled recycling service to all facilities located at the County Transfer Station and at all facilities in the City of Lompoc. Until recently the City of Lompoc did not offer commingled recycling service to commercial businesses. Now the County has the opportunity to recycle at all County facilities in Lompoc. The Division plans to have 10 new facilities added to the commingled recycling program by June 30, 2002 and 25 by June 30, 2003.

Hazardous Waste Recycling

County employees utilize hundreds of batteries each year for pagers, cameras, calculators, palm pilots, and other electronic equipment. These batteries are hazardous waste and need to be disposed of properly. Therefore the County Green Team initiated the County Battery Recycling Program on April 1, 2001. The Battery Recycling Program focuses on diverting dry cell batteries ("D" sized batteries and smaller) including alkaline, nickel-cadmium, and lithium batteries from our landfills.

Batteries are collected through the County's brown internal mail system. Employees can send the batteries through the "brown mail" system to Purchasing/Batteries. The batteries are collected in the Mail Room and are sorted into the three different buckets according to battery type. County employees are asked only to submit batteries from work and not to submit batteries from home. Any corroding or leaking batteries must be placed in a plastic bag. On a regular basis, General Services will properly dispose of the batteries at the Community Hazardous Waste Collection Center, located at the University of California, Santa Barbara (UCSB) campus. Since April of 2001, the County has collected and diverted over three hundred pounds of batteries from our landfills.

Energy Efficiency in County Facilities

In the summer of 2000, California was experiencing a serious energy crisis. Energy costs increased dramatically, and users in some areas experienced service interruptions (brown-outs). Early in 2001 the Green Team distributed copies of **Tips for Energy Efficiency** to all County employees and posted the same information on the County intranet. The tips included reducing lighting, using stairs instead of elevators, turning off appliances and computers when not in use, looking for the Energy Star label when making purchases, properly maintaining equipment and notifying General Services about any building envelope air leaks.

Although the dire predictions in 2001 regarding the energy crisis and anticipated shortages during the summer did not come to pass, the County's energy costs increased. The County spends about \$2.5 million a year for energy at all County facilities. The Green Team and General Services are committed to taking steps in every County facility that will reduce energy use to the most efficient possible level without affecting the ability of employees to work productively.

In July of 2001 the Board of Supervisors asked the General Services department to take additional steps to reduce energy consumption in County facilities. These steps included cost effective employee and public education and facility conservation measures that would reduce energy use and minimize the impact of increasing energy costs for the County. These efforts have been successful. Energy use in County facilities declined over 9% between 2000 and 2001. In North County, the reduction was a substantial 25%.

To reduce energy use in facilities, General Services has implemented a large-scale project to replace inefficient lighting, upgrade heating/cooling systems, reduce the use of lights in lobbies and hallways and purchase fans for employees who are too warm. Some of these efforts have been rewarded with rebates from the electric utilities. These retrofits are nearly complete. In addition to the utility rebates, the General Services expects to save over \$60,000 per year on energy bills.

Employee outreach is a critical component of the energy efficiency project. County employees play an important role in reducing energy use in their own work environment. To help educate employees, the General Services Department and the Green Team have initiated an employee awareness program. A network of energy conservation “advocates” has been established, representing each department and each facility. These advocates have received special training and are responsible for encouraging fellow employees to use energy efficiently through education and periodic reminders.

This program is being conducted in partnership with the energy utilities, the Southern California Edison Company and Pacific Gas & Electric Company. The program will include the replacement of inefficient appliances when practical.

A Note on Green Energy: In 1999, General Services did a comprehensive search for reliable energy suppliers that provide energy from renewable sources, such as wind and solar power, geothermal and biomass technologies and found one or two sources that had excellent governmental references. However, due to the uncertainties in the market and the volatility of alternative energy suppliers, General Services with the backing of the Green Team decided that the timing was not good for switching any meters to green energy. Instead, the focus has been on energy efficiency through facility retrofits and employee outreach. The County will recommend pursuing green energy when the time is right.

Attachments for Energy Projects:

Post-It Note Reminder – Attachment A-1

Sample Guidelines for Energy Use in County Facilities – Attachment A-2

Energy Use Data for 2000 and 2001 – Attachment A-3

Integrated Pest Management

The IPM Strategy, which was adopted by the Board of Supervisors in April 2000, is currently being implemented through a series of pilot projects and the activities of the Grounds Management Committee. The Grounds Management Committee continues to meet quarterly to discuss pilot projects, training workshops and classes, opportunities for joint purchases of equipment for IPM practices and IPM strategy implantation. Please see Attachment B for the fiscal year 2001/2002 updates.

Hybrid Vehicles

In the year 2000, the County's General Services Department purchased its first hybrid vehicle, a Toyota Prius, for the motor pool at the Administration Building in Santa Barbara. Each time the vehicle was checked out, the driver was asked to complete a survey regarding their experience with the vehicle. The Prius has a 98% satisfaction rate with County employees. The hybrid vehicle gets about 39 miles per gallon (mpg) as compared with 22 mpg for the comparable Ford Taurus that is offered in the pool.

The County's Motor Pool fleet now has three Toyota Prius* hybrid cars; including one each in the motor pools at the Calle Real Center in Goleta and the Betteravia Government Center in Santa Maria. The County has been approved to receive grant funds through the Santa Barbara County Association of Governments to purchase 10 more hybrid vehicles. The grant funding will pay 90% of the vehicle cost and the County will pay the remaining 10%.

There are also 25 compact cars (Saturn SL2's) currently in the Pool. County staff will be looking for hybrid vehicles from domestic vendors for future purchases.

*The Toyota Hybrid System (THS) combines an efficient engine with an electric motor to not only power the car, but also recharge the vehicle's batteries through a generator and regenerative braking system. The Prius never needs to be plugged in for recharging. An Advanced Control System (ACS) monitors each system component to maximize fuel efficiency and minimize energy.

Attachment A-1

Attachment A-2



SAMPLE ENERGY MANAGEMENT PLAN GUIDELINES FOR GENERAL OFFICE SPACES

PURPOSE

Although the dire predictions regarding our energy crisis and shortages anticipated during the summer months did not come to pass, we are facing substantial increases in our energy costs. The County currently spends about \$3 million a year for energy at all County facilities. We need to take steps in every County facility that will reduce energy use to the most efficient possible level without affecting the ability of employees to work productively. The purpose of this plan is to encourage energy conservation ethics and practices throughout County facilities. Efficiency, the high cost of energy and its limited supply are key factors considered when developing an energy management plan.

DEFINITIONS

General office space - An area where control of energy consumption is primarily limited to lighting, computers and other general office equipment.

Departmental Advocate - *An individual selected by a department to help facilitate the development and implementation of the Energy Management Plan.*

SOLUTIONS

LIGHTING

1. Partial lighting should be used whenever practical.
2. Overhead lighting shall be reduced by 2/3 when possible without creating unsafe conditions or interfering with performance of duties. This can be done on most bi-level lighting by switching one of the two switches for each bank of lights.
3. Utilize task lighting or natural light when possible.
4. All lights shall be turned off in unoccupied rooms (including break rooms) at all times.
5. Security and safety lighting shall be held to the lowest acceptable levels.
6. Decorative lighting shall be switched off.
7. Custodial personnel shall turn lights on only as needed for custodial work and then turn lights off when work is done.

SPACE HEATERS

1. Eliminate the use of electric space heaters unless absolutely necessary. If the use of an electric space heater is required for health and safety reasons, use the partial power setting and manually turn off the unit when leaving your work area.

ELECTRONIC EQUIPMENT

1. All copiers and printers equipped with an automatic power-down or "Energy Saver" feature shall have this feature enabled and used when practical.
2. All non-essential personal computers, copiers and other electrical equipment shall be turned off outside normal business hours and when not in use, unless there is a specific and essential need for after hours operation.
3. During normal business hours, use of copiers and printers shall be consolidated. Where possible, redundant printers and copiers shall be turned off and work shall be directed to nearby machines.

4. Use of break room electrical appliances should kept to a minimum and coffee makers shall be turned off when not in use.

In most offices, monitors probably use more energy than all the printers, copiers, fax machines, task lights and microwave ovens combined. Both computers and monitors use a great deal of energy, though flat screen monitors use much less. A great deal of unnecessary energy consumption occurs when computers are left on when not in use.

5. When practical, turn off computers when they will not be used for an extended period of time during normal business hours. Consider using any energy saving features your computer may have.
6. Set your monitor to power down automatically (“*sleep mode*”) when the computer is not in use. You can select the amount of time that elapses before your monitor turns itself off until you return and re-activated it by moving your mouse or striking a key on the keyboard. If you need help with the power management feature, please contact your departmental LAN Administrator for assistance.
7. In most cases, both computers and monitors should be shut down when they are unlikely to be used for a significant period of time.
8. Unplug “power thieves” such as VCR’s and televisions that use small amount of electricity on a continual basis.

END OF WORK DAY

All non-essential electrical use shall be terminated before leaving the office at the end of the day. This includes, but shall not be limited to all non-essential lighting, computers and monitors, fax and copy machines. Security lighting should be held to the lowest acceptable levels.

ADDITIONAL INFORMATION

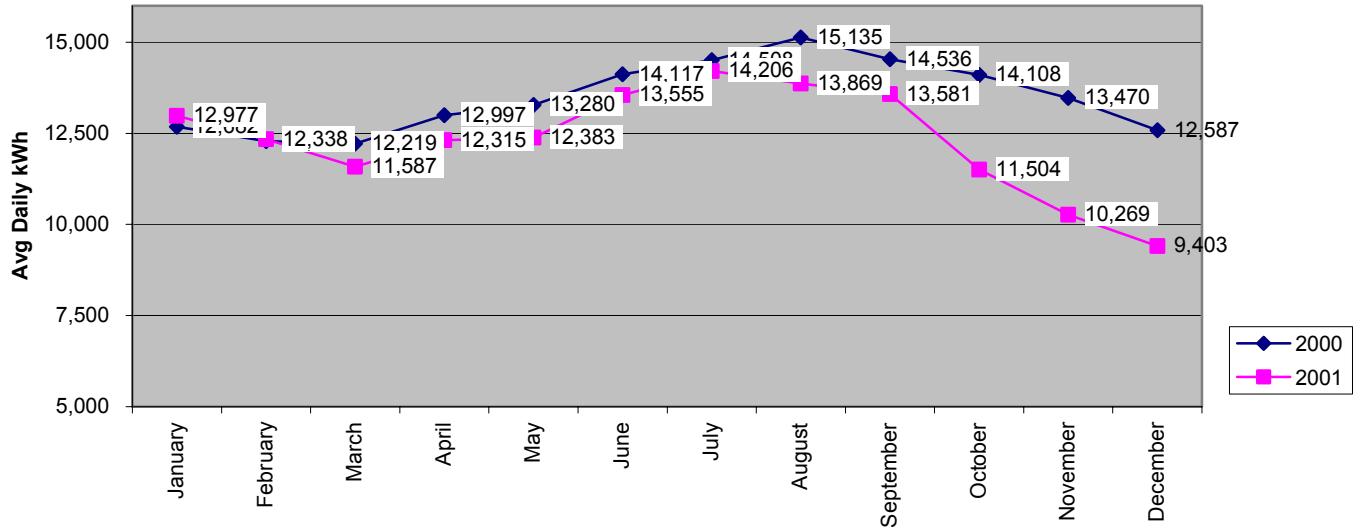
It is the intent of this plan to conserve energy in a way that does not disrupt the quality of service provided to the community or decrease work productivity. It is important to use common sense when implementing the various measures in your work area to ensure that the public’s and/or your health and safety are not compromised. When practical, try to further curtail your energy use between the hours of 4:00 p.m. and 8:00 p.m., since this is considered the critical evening peak period for electricity demand.

If you have any questions, please contact XXXX.

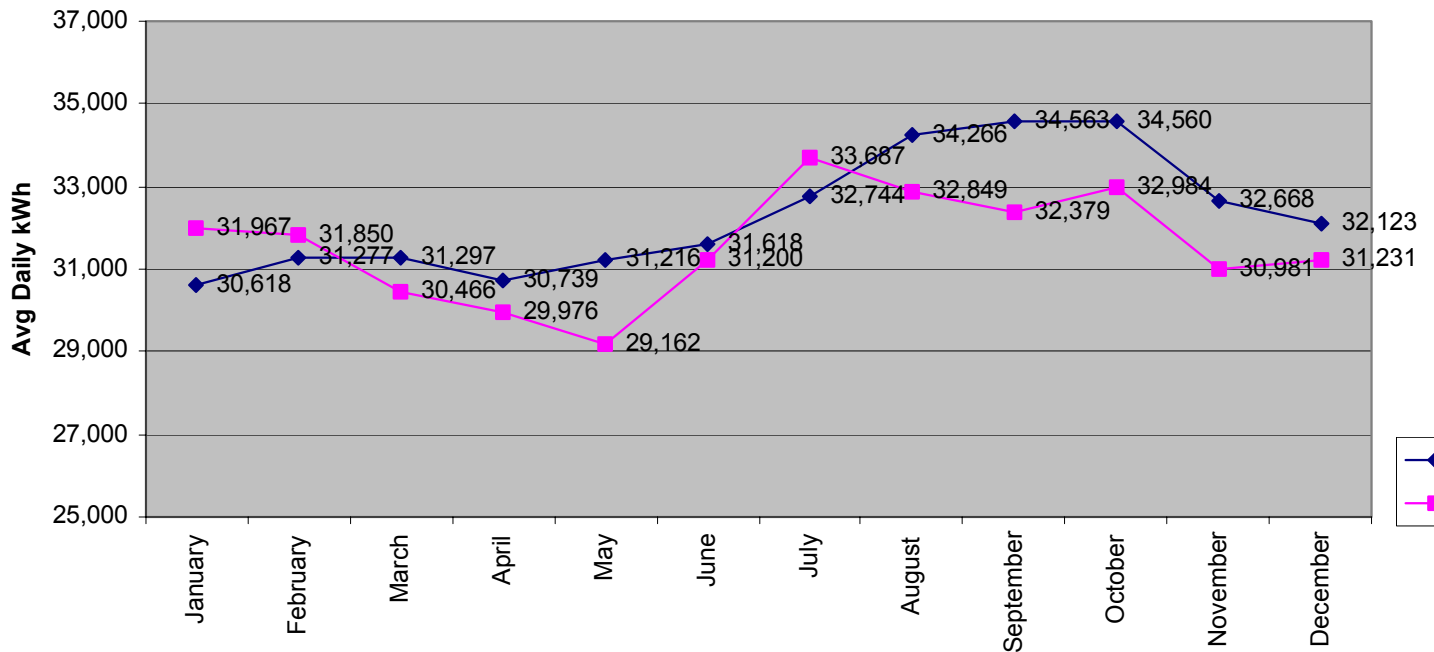
Creative ideas are always encouraged. Please be sure to share them with your departmental advocate and the General Services Department.

Attachment A-3

North County
Average Daily kWh by Month



South County
Average Daily kWh by Month



Attachment B

Department: Parks
Contact Name: Rick Wheeler
Contact Extension: x5653
IPM Coordinator: Richard Lindley

Pilot Project Description

In response to the Board of Supervisors adopted **Integrated Pest Management Strategy** County Parks wishes to report the following summary of the year's activities, March 1, 2001 through April 2002.

- The Santa Barbara County Park Department continued contracting for Pest Control Advisor (PCA) services with a PCA (local vendor) that does not provide pest control material or treatment services to the department. The PCA was selected for his training and experience in Integrated Pest Management (IPM) techniques as well as his knowledge of chemical pest control methods. The PCA makes recommendations for dealing with pest problems and treatments at our facilities.
- Parks participated in quarterly meetings of the Grounds Management Committee (GMC), and appointed a park department staff member as Pest Management Coordinator (PMC) to manage the departments IPM program. No new chemical controls or products were requested or added to our use list. Our Department PMC also set up the annual training in IPM and chemical pest control for department staff last spring, as he will this spring.
- Parks sent staff to Integrated Pest Management training at Lotus Land and the University of California at Davis.
- Emerald Terrace and Stow Canyon open spaces, the two pilot sites established by County Parks in March 2000, where organic methods were used as the maintenance standard, are still being maintained in that manner. The sites are also being used to test new techniques for weed control using propane-fired torches at fence lines and sidewalk cracks. The sites are still monitored for labor and material costs, as well as appearance, for comparison to a control site of comparable size and use. This data collection confirms the increased costs of landscape maintenance using IPM and organic "Green" methods of maintenance vs. standard practices.

It should be noted that these sites are now neighborhood parks in the City of Goleta. County Parks continues to operate them as described above pending any changes that might be required by the Park, Preserve and Open Space Maintenance Contract that is currently being negotiated by the department with the new City of Goleta.

- Santa Barbara County Park Department's - **Annual Pesticide Use Summary**

The following data is for July 2000 through June 2001. This reporting time frame was chosen to conform to the County's Fiscal Year. The data provides a twelve-month base line for the comparison of the quantities of each product used from year to year. The products listed below were applied at various county parks, open spaces and county grounds.

SANTA BARBARA COUNTY PARK DEPARTMENT ANNUAL PESTICIDE USE SUMMARY				
Pesticide (name/type)	Amount Used 2000/01	Amount Used 1999/00	Applied by County or contractor	Targeted for phase-out?
Roundup PRO	32 gal	54 gal	County Park Staff (Weed Control Post Emergent)	NO
Surflan	7.5 gal	22 gal	County Park Staff (Weed Control Pre-Emergent)	NO
WILCO Gopher Bait II	152.6 lbs.	169 lbs.	BOTH – Parks, Open Spaces, County Grounds, & Los Carneros Dam	NO
WILCO Squirrel Bait	100.75 lbs.	192 lbs.	County Park Staff Ground Squirrel Control	NO
Ramik Green Rat Bait	4.5 lbs.	6.5 lbs.	County Park Staff Rat Control	NO
PESTCON Systems Fumitoxin	0 tablets	0	BOTH (Ground Squirrel Control)	Periodic, Special Use Only

It should be noted that the reduction in materials used from FY 99/00 to FY 00/01 is a result of several different things. There was a conscious effort to use less herbicide by using other weed control methods such as flame torches, hot water, mechanical and hand removal. Weather also played a role in reducing the quantity of herbicide used. The winter was a dryer than normal resulting in less weed growth. There was also a decision to use little or no herbicides at 22 additional south coast open spaces. Again, weeds are being controlled using techniques other than spraying.

- Pre-Notification of facility users when spraying or fertilizing was planned continued.

County Parks routinely posts notices, in English and Spanish, 48 hours before and 48 hours after the application of herbicides or chemical fertilizers in all locations where these materials are used and will continue to do so.

- Alternative Weed Control Methods Being Used or Explored

Mulch - In the past year we estimate that we have used approximately 2,000 cubic yards of wood chips and mulch to assist us in our weed control program. The wood chips come from County Solid Waste and local tree service companies.

Mowing – We mowed approximately 40 acres of weeds three to four times last year. The mowed vegetation was left on the ground.

Hot Water - We purchased, with a 50% matching contribution from County Water Resources, a \$15,000 Smithco Aquacide Environmental Weed Control System. The system uses a process in which water is super heated on-demand (up to 280° F+) under very low pressure (less than 40 lbs.) through a boiler type apparatus. The water is then pumped via a heat resistant hose to a control device, which permits application of the super heated water to the treatment zone. The super heated water destroys the cellular structure of the vegetation being treated killing it. The process uses only water to kill herbaceous vegetation. This is a non-toxic method of weed control. No breathing protection or protective clothing is required for its use, and no harmful by products are left on the ground. The system can be used under windy or wet conditions effectively, and does not endanger people, pets and wildlife.

Weed control using the Aquacide process is good, however, there is some evidence of new seed growth after treatment that requires re-treatment. This problem is common with RoundUp Pro, too. To work properly the hot water must be applied slowly, and that increases the labor costs of controlling weeds with this method. The system does not work well on woody perennials.

The use of the Aquacide system contributes to cost savings by reducing the amount of herbicides needed for perimeter weed control. Its real value is that there is no toxic impact on the person doing the application, the facility users, or the environment. County Parks will continue to use this equipment for revegetation projects and routine weed control as staffing permits.

Propane Flame Unit – This consists of a torch type flame unit attached by a hose to a portable Liquefied Petroleum Gas bottle. It produces a heat up to 2000 °F. This heat, when applied briefly to the growing weed, causes its cells to burst killing it. You do not burn the weed to ashes. These units can be safely used without creating fire hazards in our Park environments.

To put the efficiency of these various weed control methods in perspective I have provided a table indicating how many square feet of weeds can be dealt with by each weed control method in one minute.

WEED CONTROL METHOD	SQUARE FEET TREATED / MINUTE
Aquacide (Hot Water)	12.26
Roundup Pro (Herbicide)	31.22
Propane Gas Flame (LPG)	47.25
Mowing (Tractor & Flail Mower)	1283.00

County Park’s weed control program includes the use of all of these techniques to perform weed abatement in our facilities as part of our ongoing Integrated Pest Management Strategy.

- **New Pilot Projects for 2002/2003**

Parks will continue to operate using IPM methods and track the costs and impacts on our operations and budget.

Weed Fabric & Mulch – We are slowly installing weed fabric covered with mulch in shrub beds at various locations. This will reduce the amount of weed control maintenance that must be done to keep these beds weed free.

Mulching & Mowing – We are trying this method of weed control in larger undeveloped open space areas. The process consists of mowing, then applying a thick layer of mulch or chips. The following weed season, as weeds grow through the mulch, a tractor-mounted rototiller will be run through the area at grade to pull out the weeds, and new mulch will be applied as necessary. Hopefully, this will reduce the multiple mowing per season requirement and reduce the need for handwork or spot spraying with herbicide or hot water.

Department:	Public Works - Flood Control
Contact Name:	Larry Fausett
Contact Extension:	x3437
IPM Coordinator:	Larry Fausett

Pilot Project Description

The Flood Control District's pilot project for 2001 was aimed at further assessing wood chip mulch to control weeds on access ways rather than applying a pre-emergent herbicide. In addition to continuing the application started last year on an access area next to Sycamore Creek at Soledad Street mulch was applied to an access road along a tributary to Devereaux creek in an attempt to evaluate a problem noted in last years report. The problem identified by field personnel is a function of the fact that a very thick layer of mulch has to be laid down to prevent most of the weed growth. That thickness of mulch, on certain types of soil, where some District access roads are, can keep the substrate so wet that it is likely that District equipment would not be able to use the access road during the winter. There were two problems with this year's evaluation effort. In both locations the material biodegraded such that more mulch had to be brought in and spread in order to maintain the thickness necessary to preclude weed growth. This was expected based on last years experience at the Sycamore Creek site. The second problem was uncontrollable, there was not enough rain this past winter to make any place muddy, thus we still don't know whether this is an insurmountable problem.

As noted in last years report the weeds are not controlled as effectively using mulch as when the area is sprayed with an herbicide, however, as was noted in last years report there are many areas where it is not necessary to have the control any more complete then what was achieved.

Summary of Results

The use of mulch is more time consuming and thus is more costly because the mulch takes longer to apply initially and has to be reapplied. The cost estimates in last year's description of the project were accurate except that the original estimate did not anticipate the reapplication. Thus the herbicide application on the Sycamore site would still cost about \$10 but the mulch cost about \$200 for the year, all in labor costs (the site is small so the mulch has to be spread by hand). Similarly the Devereaux site would have cost about \$20 to spray (even though it is a much longer stretch) and about \$240 to mulch each time because a piece of equipment can be used to spread it. Thus the total cost to mulch the Devereaux site is \$480 for the year. There was a slight problem using our small tractor to spread the mulch because it tends to clump up and does not "flow" like dirt, sand or gravel do when being pushed by a blade.

New Pilot Project for 2002/2003

The mulching project will be continued to evaluate the potential problem of causing vehicles to get stuck by reapplying it to the Devereaux site as necessary and in another area where the soil is heavy and poorly drained a layer of gravel will be applied first followed by mulch. This will serve as a control such that if there is sufficient rain next winter both sites can be checked to see if the problem is really severe and if the simple addition of gravel first will allow sufficient "bridging" to eliminate the problem. Staff will also investigate whether there is a source of free mulch in the North County (e.g. from the City of Santa Maria's Solid Waste Division) and if there is whether it can be applied more efficiently in larger quantities by the use of some other type of equipment such as a motor grader.

An example of an area where it might not be necessary to control vegetative growth to the same degree as has been done in the past is the Santa Maria River Levee. This year the District is implementing another pilot project. The use of pre-emergent herbicide was discontinued on certain portions of the Levee. Specifically, the District did not spray the lower levee road or the slope of the levee on the side away from the river. This spring photos will be taken and labor records will be kept as part of an effort to document the results with regard to any increased cost of maintenance. The pilot project on the levee has not progressed to the point where any meaningful results can be reported at this time.

District staff will also be reviewing all of the sites that have been in the spray program in the past prior to any further application to insure that there is a clear necessity to continue treating those sites.

- Santa Barbara County Public Works Department/Flood Control District - **Annual Pesticide Use Summary**

Pesticide (name/type)	Where Applied (Facility type)	Amount Used	Applied by (County vs. contractor*)	Targeted for phase-out? (Y/N)
Roundup Pro	Dry Creeks	816 gal.	County forces	No
Rodeo	Wet Creeks	281 gal.	County forces	No
Direx	Right-of-Way	1063 gal.	County forces	No
Telar	Right-of-Way	67 lbs.	County forces	No

Department: Public Works – Roads Division
Contact Name: Gary Christiansen / Scott Roberts
Contact Extension: x3336 / x6100
IPM Coordinator: Gary Christiansen / Scott Roberts

Pilot Project Description:

The Pilot Project for the Roads Division was to find cost efficient ways to reduce the use of pesticides along County right of ways.

Summary of Results:

For this fiscal year, the area we used for the pilot project was on Santa Rosa Road. The project was to compare the impact on mowing County right of ways with and without the use of herbicides.

We first mowed both sides of the Santa Rosa Road, then after the weeds started to re-grow and new growth began to appear, we sprayed one side of the road with Round up and left the other side alone. As a result the sprayed side only needed to be mowed once this season. Some years, when we get more rain, Santa Rosa Road and some other roads require to be mowed three times per season. It took eleven days to mow Santa Rosa Road and only two days of spraying.

Cost Comparison:

Mowing costs

Labor & Equipment	Cost per Hour	Hours	Acres	Total
2 County Employees	\$58.50	98		\$ 5,733.00
Tractor	\$10.00	98		\$ 980.00
Attachments	\$ 2.50	98		\$ 245.00
Pick Up (buffer vehicle)	\$ 1.77	98		<u>\$ 173.00</u>

Total one time mowing	16.19	\$ 7,131.00
Total twice a season		\$ 14,262.00

Spraying cost

Labor & Equipment	Cost per Hour	Hours	Acres	Total
2 County Employees	\$58.50	18		\$ 1,053.00
Port-A-Sprayer	\$ 6.75	18		\$ 122.00
Pick Up	\$ 1.77	18		\$ 32.00
Round Up @ \$50.00 per gallon times 25 gallons				\$ 1,250.00
Agri-dex @ \$5.00 per gallon times 12.5 gallons				\$ 62.00
Total one time spraying			16.19	\$ 2,519.00
Plus one time mowing			16.19	\$ 7,131.00
Spraying and mowing once a season total			16.19	\$ 9,650.00

This is a difference of \$4,612.00 to \$9,224.00 a season depending if mowing two or three times is necessary.

By these calculations, the cost will be \$440.00 an acre for mowing and \$156.00 an acre to spray. The Central County has approximately 200 acres of right of way that is mowed annually. The total cost to mow 200 acres twice is \$178,000.00. Spraying once, with Round-Up @ \$31,200.00, and mowing once @ \$88,000.00 will cost \$119,200.00, a difference of \$58,800.00.

Two thousand and one was the second year in a role that the Roads Department had not used an outside vendor to spray the County right of ways. As a result, with out the use of Pre-emergence herbicides, weed growth is increasing in the areas previously treated.

• Santa Barbara County Public Works Department/Roads Department - **Annual Pesticide Use Summary**

Pesticide (name/type)	Where Applied (Facility type)	Amount Used	Applied by (County vs. contractor*)	Targeted for phase-out? (Y/N)
Round Up	Right of Way	145 gal.	County forces	No

New Pilot Project for 2002/2003

To monitor the use of Merit and/or Pointer Insecticides used in the County Tree Program. Merit and Pointer's active ingredient is 'Imidacloprid', which carries a Warning label. These insecticides are used for controlling aphids in Modesto Ash trees and Pine Needle Scale in Monterey Pine trees. They will be administered using an injection system by an outside vendor.

LOCATION:

The location of the 02 / 03 Pilot Project will be on County trees on an as need basis.

ESTIMATED REDUCTION IN PESTICIDE USE:

The use of Merit and Pointer Insecticides can vary greatly from year to year depending on the degree of insect infestation. We usually use these insecticides only when the health of the trees is being adversely affected.

BUDGET:

No significant change for this fiscal year.

TIMELINE:

This program runs through the 02 / 03 fiscal year and evaluated on a continuous basis.

Department:	General Services
Contact Name:	Paddy Langlands
Contact Extension:	x3096
IPM Coordinator:	Paddy Langlands

Pilot Project Description

The General Services Department's IPM pilot program began in April 2000 following the Board's adoption of the IPM Strategy. The original pilot study was conducted on the Administration building at 105 E Anapamu Street in Santa Barbara. During the first year there no pest related work orders were requested against the pilot building. Due to this it was decided in year 2001/2002 to change the pilot building to the Courthouse as there were generally more pest and rodent problems in the courthouse.

The Objective for this pilot program is to reduce the amount of pesticides that are used and stored by County employees on site. This is to be done by generating base measurement for requests for pest control in the Courthouse, then notify all County staff of the Pest Services Request Policy (See Attachment B1), then measure the number of requests for pest control over a similar period of time to determine if there is an increase in the number of requests made to General Services for pest control once employees are aware of the correct procedure for requesting pest services. By educating employees about IPM practices and using a consistent method for requesting pest control services from General Services, the new program should result in the elimination of shelved pesticides within County facilities.

Prior to the implementation of this new program, building occupants did not follow a consistent method for dealing with pest issues. Occupants were not educated in IPM and there were no published guidelines for requesting pest treatment or precautionary measures taken. As a result, employees were not cognizant of methods used to ensure that rodents and insects had no access to food and water. It is assumed that many employees were purchasing pesticides on their own and applying them within the building.

Summary of Results

Official recording of all pest related requests for work started in February 2001. From February 2001 until March 2002 there were a total of three pest related work orders in the Courthouse. In March 2002 the IPM policy was sent out to all County employees. General Services staff is monitoring the number of requests for

pest services for the Courthouse and will compare the 2002/2003 total with the 2001/2002 total to determine the effectiveness of the notice sent to all employees regarding pest service requests.

New Pilot Project for 2002/2003

General Services staff will continue to monitor the number of requests for pest services in the Courthouse now that the Pest Services Request Policy has been sent to all County employees. In March 2003, staff will conduct a comparison of 2001/2002 requests and 2002/2003 requests to determine if the Pest Services Request Policy is a viable option for achieving the goals of the IPM Strategy adopted by the Board in 2000.

- Santa Barbara County General Services Department - **Annual Pesticide Use Summary**

Please see Attachment B2.